

On-site work zone training gets everybody on board

The slower pace of October and November, before snow flies, is a great time to invite the T.I.C. to your place for a day-long Work Zone Training session. You save the travel cost and time of sending two or three people to the session in another community, and for a relatively low price, everybody on your staff can be trained.

Retiring Walworth County Highway Commissioner Ben Coopman is glad he did it in April. "It's come in handy a number of times when people who don't do work zone set ups all the time had to do it," Coopman says. "It really cut down the set-up time. They knew where to look and how to look it up in the booklet, and how to read the diagrams."

The county sponsored two sessions and invited towns to send representatives too. The second session also helped cover people who were on vacation or out sick for the first date.

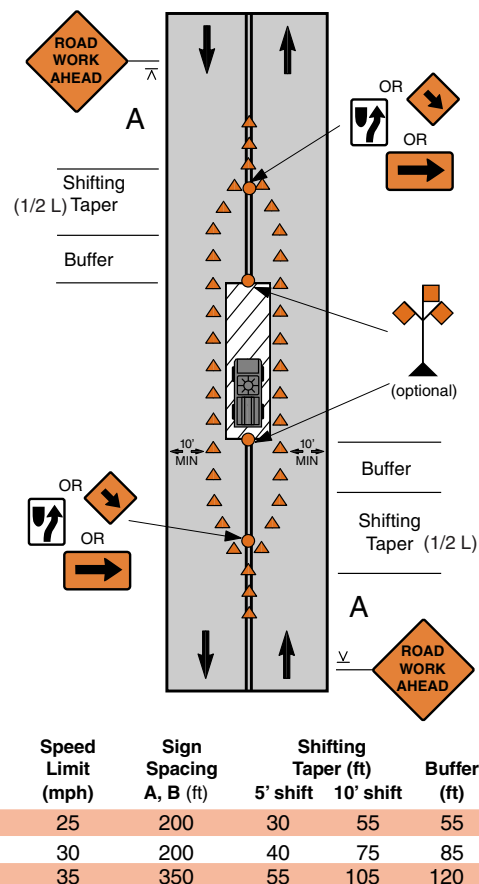
For off-site training, usually only supervisors can go. With the training

on site, even entry level workers were included, and they appreciated it. "One comment I heard was, now I've got a better understanding of the things you have to take into account for a site like liability and judgement; it's not just black or white," says Coopman.

The six hour training session costs \$400 for up to 30 participants, \$800 for 30-60. It covers basic work zone rules and lets participants apply them through group problem solving exercises. All participants receive their own Wisconsin Work Zone Safety pocket-size guide. In addition to your own work force, consider inviting local contractors and utilities who work in your rights of way, and neighboring municipalities.

To schedule a Basic Work Zone workshop at your site, call Jane Sauer at 800/442-4615 or e-mail at: sauer@engr.wisc.edu

An on-site workshop helps train everybody to use diagrams like this one.



Address incorrect?
Please call or write us with
the correct information

Route To

Do not use for return mail

Nonprofit Organization	
U.S. Postage	
PAID	
Madison, Wisconsin	
Permit No. 658	

TRANSPORTATION Information Center — LTAP
University of Wisconsin-Madison
432 North Lake Street
Madison, WI 53706



phone 800/442-4615 • fax 608/263-3160 • email sauer@engr.wisc.edu

Local Technical Assistance Program (LTAP)

Printed on recycled paper



Crossroads