

2018-2019

FINAL REPORT

UniverCity Year

Better • Places • Together

Village of New Glarus Comprehensive Outdoor Recreation Plan

URBAN AND REGIONAL PLANNING 912: PLANNING WORKSHOP

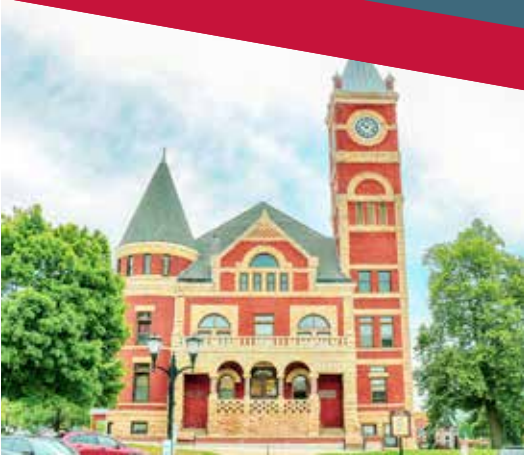


Table of Contents

Definitions	3
1. Introduction	4
Purpose & Role of Parks.....	4
Planning Process	4
Public Participation	4
Volunteer Park Observations	5
Public Survey.....	5
Focus Groups	5
2. Existing Conditions	6
Demographics	6
Physical Characteristics	6
3. Recreation Resource Inventory	8
Village-Owned Facilities	8
Existing Recreation Programs & Events	11
State Trails & Parks	11
School-Owned Facilities	11
Private Facilities	11
4. Recreation Needs Assessment	12
Focus Groups & Survey Results	12
NRPA Standards	13
Wisconsin State CORP Priorities	15
2010 CORP Recommendations	15
5. Goals & Objectives	16
6. Recommendations	17
Park Vision	17
General Recommendations	17
Selected Projects	18
Parks Specific Recommendations	18
Opportunities for Partnerships & Collaboration	20
Future Growth Accommodation	21
Categorizing by Level of Investment	22

DEFINITIONS

Active Recreation

Any Outdoor Sport or Athletic Activity, formal or informal. Examples include baseball, basketball, soccer, football, swimming, and bicycling.

Passive Recreation

Outdoor recreation consisting of less-strenuous or non-organized activity such as picnicking, relaxing, nature appreciation, fishing, and walking.

Service Area

The distance around a park within which users will typically travel to use its facilities, usually expressed in terms of service radius.

Universal Accessibility

A site, building or facility is universally accessible if it can be approached, entered, and used by people of varying abilities.

Accessible Route

A continuous unobstructed path; may include parking access, ramps and walks.

Barrier-free Design

Refers to the physical features that make sites and facilities universally accessible.

Conservancy

Areas of environmental sensitivity, often wetlands or steep slopes that are unsuitable for intense development. They frequently have ecological, scenic and open space value.

Undesignated open space

Undeveloped park space that does not contain facilities or programmed activities.

Programming

Designated park activities including both temporary events, such as sporting events and festivals, or permanently installed activities, such as swimming pools and playgrounds.

1.0 INTRODUCTION

Purpose & Role of Parks

The Village of New Glarus recognizes the importance and benefits its parks and open space system has on the Village's character and quality of life. Parks provide opportunities for social activities, education, and community involvement. Beautiful parks and a variety of recreational activities help attract new residents, tourism and commerce.

This document is intended to formally update the existing Comprehensive Outdoor Recreation Plan (CORP) adopted by the Village of New Glarus in 1997, and updated in 2010. Adoption of the updated plan is required for the Village of New Glarus to be eligible for parks cost sharing funding administered through the State of Wisconsin.

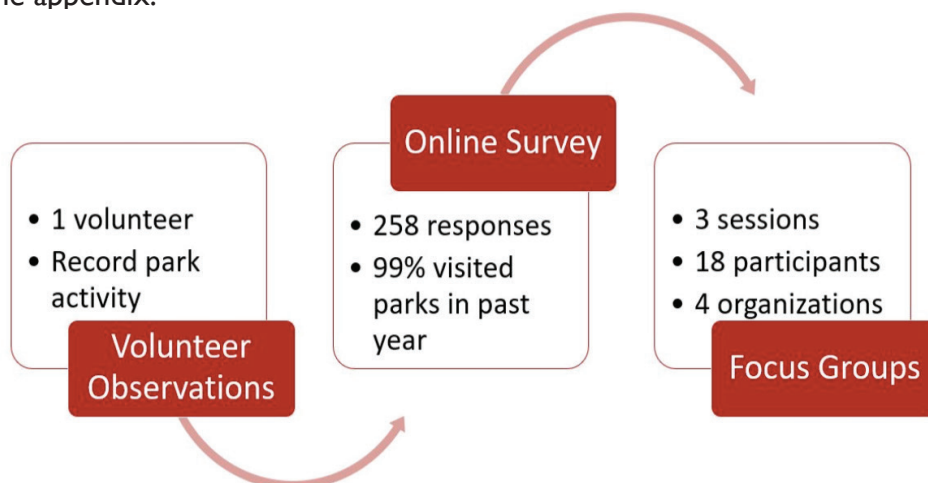
This plan is a cooperative effort based on resources from the original CORP, the Village 2016 Comprehensive Plan, and input from Village staff and residents. This plan will serve as a guide to the Village to meet the recreational needs of its current and future residents.

Planning Process

The Village of New Glarus entered into the 2018 UniverCity Alliance program with the University of Wisconsin-Madison to update their Comprehensive Outdoor Recreation Plan. A team of Graduate students from the Department of Planning and Landscape Architecture prepared the plan for adoption by the Village. Preparation of the plan occurred over a three month period and involved meetings with the New Glarus Parks Commission, park observations, a public survey, and a series of public focus groups. The team provided the Parks Commission a draft plan to review and provide feedback before voting whether to approve the plan.

Public Participation

Public participation is key to every planning process to ensure the objectives and recommendations of the plan align with the interests of those who will be impacted by the plan. The public participation strategy for this plan included volunteer park observations, a public survey, and focus groups with various stakeholders. This section describes these activities, with supporting materials in the appendix.



Volunteer Park Observations

The team contacted several community group leaders in the Village to solicit volunteers to observe New Glarus parks at various times of the day. The goals of this process were to collect data on how parks are used and to involve the public in a very hands-on part of the planning process. One resident volunteered, and between the volunteer and the team, data was collected on each of the parks and used to inform discussions in the focus groups.

Public Survey

The team developed a survey to determine the interests and priorities of village residents for the parks system in New Glarus. The survey asked for basic demographics of the respondent, the respondent's interaction with and usage of parks in the Village, opinion of the current state of Village parks, and priorities for future park investment. The survey was made available online on the Village website and was distributed through the school system.

The survey collected 258 responses from a mix of Village (47%), Town (32%), and Green County (18%) residents, plus a handful who did not identify as any of these groups (3%). Respondents reported their households contained members of varying ages, but respondents with children were in the majority. 99% of respondents had visited a New Glarus park within the past 12 months at the time of the survey and 56% said they visit Village Park most frequently.

Summarized survey results can be found in **Appendix 1** and the responses were used to drive the focus group conversations and in the needs assessment found in Section 4 of this plan.

Village of New Glarus Parks Survey

12
SURVEY
QUESTIONS

258
SURVEY
RESPONSES

Focus Groups

The team hosted a series of three focus groups. The first focus group was with the New Glarus School Board and the second two were open to the public. Emails informing residents of the focus groups were sent to various organizations in the Village, which are listed in **Appendix 2**. In total, 18 people participated in the focus groups and represented the New Glarus Schools Board, the Library Board, the Lion's Club, and the Youth Committee.

Each focus group was asked the same questions, which can be found in **Appendix 3**, but conversations were allowed to flow freely depending on the interests and ideas of the group. The questions focused on the role of parks in the community, what is working well today in the New Glarus parks system, and opportunities for improvement.

Aggregated notes from the focus group sessions can be found in **Appendix 4** and the themes were used in evaluating needs and demands found in Section 4 of this report.

2.0 Existing Conditions

Demographics

The Village of New Glarus is an affluent community of about 2,200 people¹. In Green County, skilled, middle income jobs in production, education, healthcare and social services outperform the rest of the state and are growing. The county experienced an overall net job loss of 590 jobs between 2015 and 2017; this job loss occurred mostly in the low-skill, low wage sector (**Appendix 5**). The village is socially and economically integrated with the city of Madison, and as part of one of the largest economic engines in Wisconsin, it is part of a group of communities that is expected to experience the highest population growth rate in the state². Most growth will be in the age group of seniors ages 65 and over, while there will be a modest increase in working age adults. No change is expected to occur in the age group of children age 0-17. By 2040, the Village of New Glarus' population will be 3,080, and most of this growth will occur by the year 2030². As we think about parks, we need to plan to maintain suitable parks for families and teens, and consider park needs for an increase in senior citizens.

2,172
VILLAGE
POPULATION
2010

3,080
VILLAGE
POPULATION
2040

90%

of households live
above the poverty
line

41%

of the population
over 25 has a
college degree

99%

of households have
access to at least
one (1) car

Physical Characteristics

The Village of New Glarus is located in the 'Driftless' region of South Central Wisconsin. This region was spared of the destructive forces of the last glacial period, resulting in a variety of natural landscapes and topographies. The Little Sugar River runs through the heart of the Village with rolling hills, prairies, and forests extending out from the river valley.

The soil is primarily silt loam, with some peat formation along the river and sandy loam along the river and by the schools (See **Appendix 6**). The low lying areas along the Little Sugar River, as well as the area comprising Village Park and Hoesly Pond, are floodplain for the river (See **Appendix 7**). These areas are listed as 1% annual chance of flooding areas by FEMA.

South of the Village is New Glarus Woods State Park, where both the forest and prairie ecosystems that define the area can be seen. East of New Glarus, along the Badger State Trail, are examples of the steep terrain that characterize the Driftless region of Southwestern Wisconsin. Additionally, Green County is home to three threatened species - Prairie Bush Clover (*Lespedeza leptostachya*), Mead's Milkweed (*Asclepias meadii*), and Northern Long-Eared Bat (*Myotis septentrionalis*) - and one endangered species, the Rusty-Patched Bumblebee (*Bombus affinis*).



DISCLAIMER: The information shown on these maps has been obtained from various sources, and are of varying age, reliability and resolution. These maps are not intended to be used for navigation, nor are these maps an authoritative source of information about legal land ownership or public access. No warranty, expressed or implied, is made regarding accuracy, applicability for a particular use, completeness, or legality of the information depicted on this map. For more information, see the DNR Legal Notices web page: <http://dnr.wi.gov/legal/>

3.0 Recreation Resource Inventory

The following section documents existing park facilities and recreation programs within the Village of New Glarus. The Wisconsin State Comprehensive Outdoor Recreation Plan should be consulted for additional information on nearby state parks.

Village-Owned Facilities

Currently, the Village of New Glarus manages six parks across approximately 23 acres. The six parks are Village Park, Glarner Park, Veterans Memorial Park, Valle Tell Park, Hoesly Pond, and Candy Cane Park. Below are descriptions of facilities and activities at each park.

VILLAGE PARK

Village Park is located on 2.8 acres near downtown New Glarus in front of Village Hall. It is one of the most used parks in the Village and is also used as a festival space in the summer. The park is a social gathering space for children, teens and adults in the community, and is especially popular in the afternoon after school lets out.

The site has the following amenities:

- Drinking fountain
- Play equipment
- 1 picnic shelter
- 9 picnic tables
- 9 benches
- Lighting
- Street parking
- Trash receptacles
- Basketball court
- Outdoor swimming pool
- Undesignated open space
- Accessible route

The site has the following amenities:

- Portable restrooms
- Equipment shed
- Lighting
- Bleachers
- Trash and recycling receptacles
- Baseball diamond
- Street parking

Glarner Park occupies two acres of land just behind Village Hall. Glarner Park is heavily used by many youth and adult leagues and clubs including New Glarus High School, New Glarus Little League, and the Youth Baseball Association for baseball and softball.

GLARNER PARK

VETERANS MEMORIAL PARK

Veterans Park is also one of the most heavily used parks in the Village, particularly by families after school. It sits on 6 acres of land and features a baseball/softball field, tennis courts, and the park system's only permanent restroom facility.

The site has the following amenities:

- Restrooms
- Drinking fountains
- Play equipment
- 2 picnic shelters
- 11 picnic tables
- 10 benches
- Equipment shed
- Lighting
- Bleachers
- Trash receptacle
- Baseball diamond
- Tennis courts
- Undesignated open space
- Accessible route
- Parking lot
- Historic marker (Veterans memorial)

The site has the following amenities:

- Portable restrooms
- Play equipment
- 3 picnic tables and 6 benches
- Equipment shed
- Trash receptacle
- Soccer fields
- Undesignated open space
- Street parking

Valle Tell Park is located on 6.3 acres of land on the east side of Highway 69. It primarily serves as a soccer park but there is also youth playground equipment on-site and the undesignated open space has the potential to serve many uses.

VALLE TELL SOCCER PARK

CANDY CANE PARK

Candy Cane Park is a neighborhood park tucked into 0.9 acres at the corner of 10th Avenue and 5th Street. It serves primarily as a playground for families who live nearby.

The site has the following amenities:

- Portable restroom
- Play equipment
- 1 picnic table
- 1 bench
- Trash receptacle
- Undesignated open space

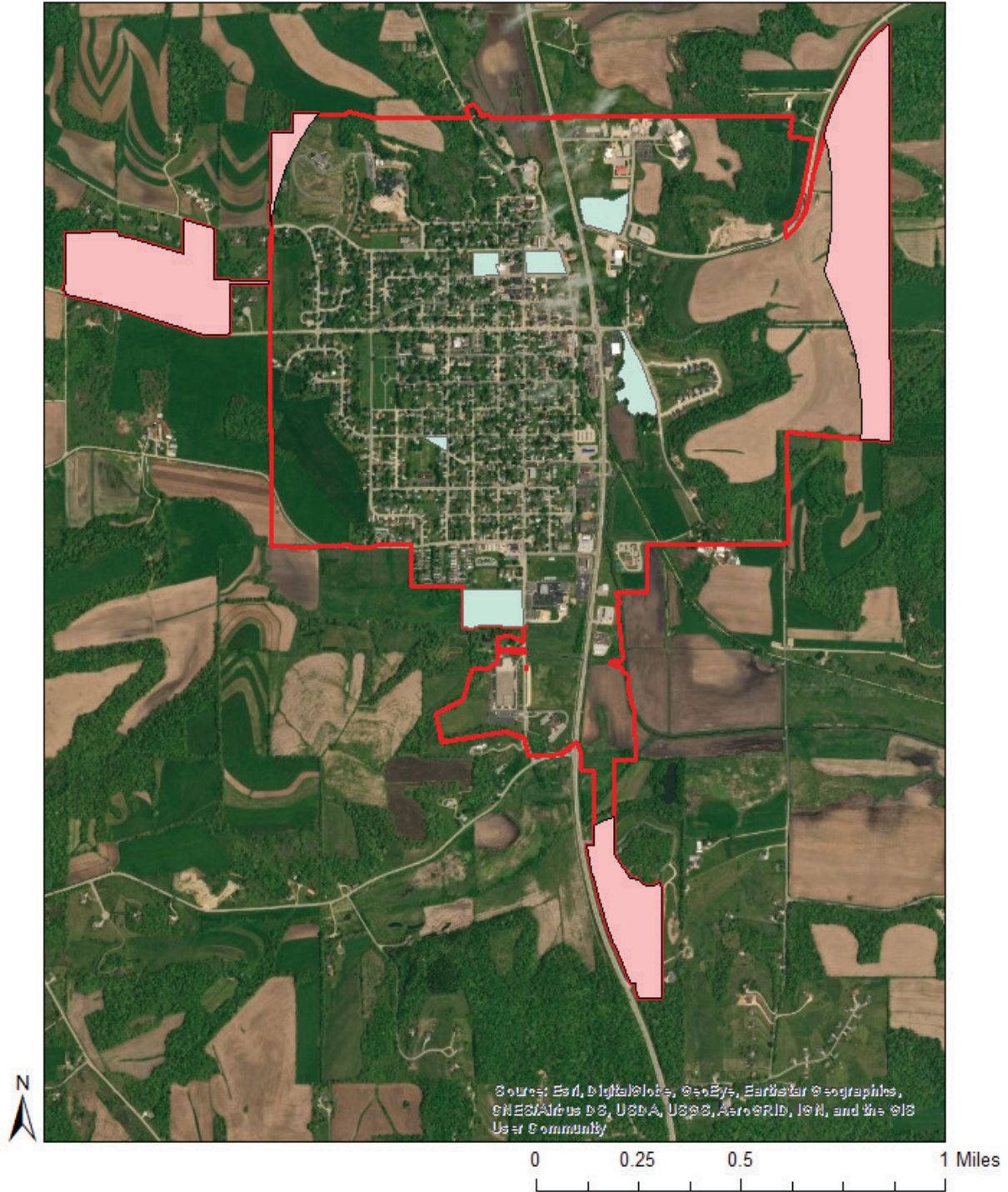
"If you've got worms, you'll catch fish" says a child resident of New Glarus. Hoesly Pond Park sits on 5.3 acres of land to the east of Highway 69 and features a pond on most of the site.

The site has the following amenities:

- Water feature (pond)
- Undesignated open space

HOESLY POND

New Glarus Village Parks



Legend

- Further than 1/2 Mile from a Village Park
- Village Parks
- Village of New Glarus

Citations

The above map shows the location of each park in the Village of New Glarus. Additionally, the red areas represent portions of the Village that are further than 1/2 mile from the edge of a village park.

Existing Recreation Programs and Events

The Village of New Glarus offers a wide variety of programming within its parks during the summer months. Below is a list of programs currently offered. Up-to-date information on programming can be found on the Recreation page of the Village's website.

- Water aerobics, swim lessons, adult lap swim, youth swim team
- Youth baseball and softball
- Adult volleyball, kickball, and softball
- "Ride and Slide" bike and swim program
- "Krafty Kids" arts and crafts program
- Sprint triathlon and kids' biathlon
- Summer library learn-and-move programs

State Trails and Parks

New Glarus is well-situated to take advantage of nearby state and regional parks and natural areas. Below is a summary of the state trails and parks located within the Village.

The Sugar River State Trail - One of the first rails-to-trails conversions in Wisconsin. The 23 mile scenic trail connects four Green County communities: Brodhead, Albany, Monticello, and New Glarus.

Ice Age National Scenic Trail - Primarily an off-road hiking and backpacking trail with opportunities for sightseeing, wildlife viewing and bird watching.

New Glarus Woods State Park - Over 400 acres, which are predominately forest with approximately 80 acres of prairie, featuring some trees over 250 years old. The park includes over 7 miles of trails, 18 drive-in campsites, 14 walk-in campsites, and 6 group sites.

School-Owned Facilities

Schools provide active programming for students and the community at their facilities. The New Glarus Elementary School has a playground and open field available for public use.

Private Facilities

Privately owned outdoor and recreation facilities provide additional opportunities for New Glarus residents to enjoy the outdoors. Below is a list of such facilities.

- Edelweiss Chalet Golf Course - located east of New Glarus and features an 18 hole course and country club facilities open to the public.
- Argus Golf Course - located north of New Glarus and features a 9 hole course, club house facilities, and picnic area open to the public.
- Wilhelm Tell Festival Grounds and Shooting Park - located one mile east of New Glarus, the Tell Grounds hosts arts and cultural events, featuring the Wilhelm Tell outdoor play.

4.0 RECREATION NEEDS ASSESSMENT

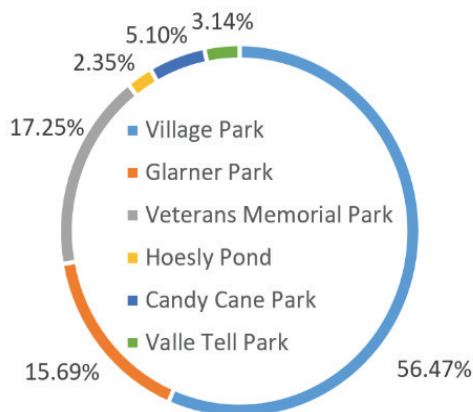
Focus Groups/Survey Results

This section summarizes themes from survey responses and focus group feedback. Data from the survey and detailed notes about specific resident requests from the focus groups can be found in **Appendix 4** and recommendations for specific parks can be found in Section 6 of this plan.

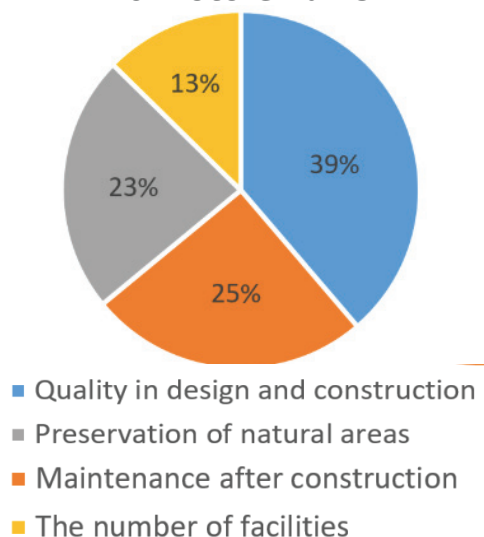
Benefits and Role of Parks in New Glarus

Focus group participants discussed a range of roles and benefits parks provide in the Village. Parks are a gathering place that brings people together from all generations and encourages new social connections. Parks and natural spaces draw people from outside the Village because they look inviting as people drive through and that draw is good for neighboring businesses. The parks also provide a space for Village festivals, which attract people from all over the state. Parks are an excellent place for families to spend time that is free and promotes healthy lifestyles, especially for children. The physical aspects of parks provide an interesting landscape and can protect from the elements by providing shade and wind breaks.

What Parks Do Residents Visit The Most?



Most Important Consideration for Future Parks



Needs and Opportunities

Based on public feedback, residents are generally happy with the amount of park space available in the Village. 72% of survey respondents said they are satisfied or very satisfied with existing park facilities and the remaining 28% said they are dissatisfied or very dissatisfied. A majority of respondents said the number of parks, playgrounds, trails, open space, and recreation programs was “just right” whereas they would like to see more recreation facilities. The top four reasons survey respondents said prevent them from using parks was lack of restrooms (55%), lack of desired facilities (40%), lack of desired programs (31%), and dogs are not allowed at the parks (30%). This question allowed respondents to choose more than one option, so percentages do not total to 100%. When asked how important it is to maintain and improve parks, trails, open space, recreation facilities and services relative to other Village priorities, 70% said “very important”, 29% said “somewhat important”, and 1% said “not important”. When asked to prioritize their top four options among Acquire land for conservation, Maintain existing conservation areas, Maintain active facilities, Maintain passive facilities, Develop new active facilities, or Develop new passive facilities, respondents chose Maintain active facilities and Develop new active facilities as their first or second choice more than the other options, indicating that active facilities are important to parks users. When asked “what is the most important consideration regarding future parks?”, all choices received a significant response, indicating strong desire for all four - 39% said “quality in design and construction”, 25% said “maintenance after construction”, 23% said “preservation of natural areas”, and 13% said “the number of facilities”.

Needs and Opportunities

Moving forward, participants would like to see some updates to and better maintenance of existing facilities. For example, more permanent restrooms, recycling, and better accessibility for various ability levels were listed as potential upgrades in all the parks. The tennis courts and baseball fields were listed as needing the most maintenance to make them safe and enjoyable to use, but participants expressed that maintenance should always be a priority, even as new amenities are built.

Participants also expressed a desire for more creative use of existing park space by constructing and programming multiple uses in spaces. For example, the tennis courts are often utilized for other activities such as pickle ball and dodgeball and users suggested renovating the tennis courts to accommodate these varied uses. Another idea is to use the open space of ball fields and parks for cultural events, for example an art fair, during the off season.

While the parks are heavily used in the summer, they lack winter amenities and programming and there is a strong desire in the Village for such activities. For example, grooming existing open space and trails for cross country skiing or creating an ice skating rink with warming hut and ice grooming would help bring the community together in winter. More indoor facilities were also requested, such as a fitness facility, gathering rooms, indoor pool, and community center.

Organizations who participated in focus groups expressed willingness to partner with the Village to develop programming and design and fundraise for projects in the community. To better coordinate these partnership opportunities, they requested a way to easily find what needs exist and which projects are being considered by the Village.

Finally, participants expressed a desire for parks and recreation to serve as a positive connection between the Village and the Town and the Village and the broader region, both physically with trails between places and socially by creating a welcoming environment for all.

National Recreation and Parks Association Standards

The National Recreation and Parks Association (NRPA) website provides data on park facilities in municipalities around the United States. The table below shows how the Village of New Glarus compares to the median park agency on measures of residents per park, acres per 1,000 residents, and number of residents per playground. As the table shows the Village of New Glarus is currently above the median value in each of these categories; however, the Village falls below the NRPA median acres per 1,000 residents based on 2040 population estimates.

New Glarus Residents per Park (ACS 2017 Estimates)	
2018 Population	2040 Population
362	513.33
New Glarus Acres per 1,000 Residents (ACS 2017 Estimates)	
2010 Population	2040 Population
10.7	7.56
New Glarus Residents per Playground	
2010 Population	2040 Population
543	770
*2010 Census Population Estimate for NG: 2172	
**Projected Population 2040 based on DOA methodology: 3,080	
*** Parks used for this analysis include Village Park, Glarner Park, Veteran's Memorial Park, Valle Tell Soccer Park, Hoesly Pond, and Candy Cane Park	

The NRPA also provides standards for different park types. The following are park types owned and managed by the Village of New Glarus:

Mini Park:

Also referred to as ‘Pocket Parks’, Mini-Parks are typically located in residential areas and contain a limited number of facilities, including play equipment, benches, and picnic tables. Mini-parks, as their name suggests, are typically an acre or less. An example in the Village of New Glarus is Candy Cane Park.

Neighborhood Playground:

Neighborhood Playgrounds primarily serve active recreation needs for children and teenagers. They are larger than Mini-Parks and meant to serve a larger population than directly adjacent residents. Facilities present in Neighborhood Playgrounds typically include play equipment, benches, and picnic tables. Examples in the Village of New Glarus include Valle Tell and Village Park.

Neighborhood Park:

Neighborhood Parks are similarly sized to Neighborhood Playgrounds; however, are meant to serve both active and passive recreation. Facilities present in Neighborhood Parks typically include active facilities as well as passive facilities, such as natural areas and shelters. Examples in the Village of New Glarus include Village Park, Veteran’s Memorial Park, and Hoesly Pond.

Community Playfield:

Community Playfields are meant to meet athletic recreation needs for the entire community. Facilities typically found in Community Playfields typically include athletic fields, ice-skating rinks, multi-purpose courts, and restrooms. Examples in the Village of New Glarus include Glarner Park, Veteran’s Memorial Park, Village Park, and Valle Tell Soccer Park.

The following table shows how the Village of New Glarus Parks compare to the NRPA recommendations. The table shows that the Village of New Glarus meets or exceeds the recommendations for all categories of parks currently owned and managed by the Village. The Village also meets or exceeds the recommendations for all categories based on 2040 population estimates.

	Acres per 1,000 Residents		Village of New Glarus Park System (2040)
	Recommended by NRPA	Village of New Glarus Park System (Current)	
Mini Park	.25 to .5	0.41	0.29
Neighborhood Playground	.5 to 1.5	4.19	2.95
Neighborhood Park	1 to 2	6.5	4.58
Community Playfield	5 to 8	7.87	5.55
*Current Pop. Estimate (2,152) from Census 2010, Projected Population 2040 (3,080) Calculated using DOA methodology			
**This table shows the acres per 1,000 residents for each different park type located in the Village for the 2040 projected population of 2040. Each Park type acreage is within the range recommended by NRPA.			

Additional park types are present in or adjacent to the Village, but are owned and managed by the State of Wisconsin. Examples include the Sugar River State Trail, which would be classified under the category ‘Greenbelts & Linear Parkways’, and the New Glarus Woods State Park, which would be classified under the category ‘Reservations & Preserves’.

Wisconsin State CORP Priorities

The most recently published update of the Statewide Comprehensive Outdoor Recreation Plan (SCORP) for 2011-2016 outlines seven goals for outdoor recreation in Wisconsin.

1. Assess, Understand, and Adapt to Growing Recreation Tourism Demands and Preferences
2. Improve Integration of Outdoor Recreation Interests and Needs in Land Use and Other Relevant Planning Efforts
3. Continue to Provide and Enhance Public Access to Wisconsin Recreational Lands and Waters
4. Conserve Rural Landscapes and Forests through Partnerships and Incentives
5. Address Funding Challenges Associated with Managing Wisconsin Outdoor Recreation Resources
6. Promote Outdoor Recreation as a Means of Improving Public Health Among Wisconsinites
7. Establish Great Urban Parks and Community Green Spaces.

The recommendations in this report take the SCORP goals into consideration by looking for opportunities to integrate the needs present in the Village of New Glarus Park System with Statewide goals in outdoor recreation. Opportunities to connect parks within the Village to State properties such as the Sugar River Trail and the New Glarus Woods State Park, should be considered to increase integration of Village and State needs in Outdoor Recreation.

2010 CORP Recommendations

The Village of New Glarus CORP was first adopted in January 1997 and was last updated in June 2010. The overall goal outlined by the updated plan is to develop and maintain recreational facilities and services adequate to meet the needs of all age groups, and to set aside sufficient recreational land to reflect the needs of both neighborhoods and the community at large. More specifically, the plan outlined objectives related to maintaining eligibility for federal funds, identifying park and open space needs in the community, engaging with residents around park needs and resources, and incorporating parks and open space into broader image and development goals.

The 2010 update for the Village CORP listed 17 short-term priorities and seven long-term priorities for the Village Park System. See **Appendix 8** for a list of these priorities, with completed projects in bold.

The remaining short-term projects are primarily concerned with improvements to drainage, universal accessibility, and facilities in existing parks. The long-term priorities address acquisition and planning of future park spaces. The recommendations provided below consider these priorities, in conjunction with updated community feedback, to determine future directions for the Village of New Glarus Park System.

5.0 Goals & Objectives

GOAL:

Ensure the provision and stewardship of sufficient parks, recreation facilities and open space areas to satisfy the health, safety and quality of life needs of all citizens and visitors of New Glarus.

OBJECTIVES:

OBJECTIVE ONE:

Provide sufficient and safe park and recreational facilities with access for all persons regardless of race, age, gender or economic status.

OBJECTIVE TWO:

Preserve and protect natural areas and conserve natural resources for the benefit of the local community and society as a whole.

OBJECTIVE THREE:

Coordinate future improvements to park and recreational facilities with other government entities inclning the Town of New Glarus, Green County, WisDNR, and the New Glarus School District to identify opportunities for join use facilities.

OBJECTIVE FOUR:

Provide residential areas of the Village with safe pedestrian, bicycle and vehicular access to all facilities.



ADA Compliance Statement

The ADA, enacted in 1990, clearly states the right of equal access for persons to local government services, including parks. On September 15, 2010 the Department of Justice published revised final regulations implementing the Americans with Disabilities Act. The 2010 Standards included new provisions for accessible design for recreational facilities such as playgrounds, swimming pools, fishing and golf facilities. Similar to when the original 1991 ADA Standards were adopted for public buildings, a community is required to complete a self-evaluation of their recreational facilities for ADA compliance by March 15, 2012. Those communities with 50 or more full or part-time employees are also required to develop a Transition Plan, which identifies what corrective work will be completed, when it will be completed, and the individual responsible for the corrective work. Any new recreational facilities designed, constructed, or shaped after March 15, 2012 are subject to the 2010 Standards. Any alteration (not simple maintenance, but something that changes the way the site is used) must make the element altered accessible and must create an accessible path of travel through the site or facility to that element.

There are some fundamental differences in how accessibility in the outdoors is accommodated compared to indoors or the built environment. While restrooms, shelters, interpretive centers, and parking lots, for example, need to follow detailed ADA guidelines, other improvements such as trails or swimming beach areas, for example, do not necessarily need to follow indoor or built environment ramp grades or surfacing requirements. A good rule of thumb for the Village to follow is that anything constructed must not make the outdoor experience any more difficult than what occurs naturally. Mother Nature does not have to comply with ADA, but the Village does.



6.0 RECOMMENDATIONS

Based on community feedback, the team developed the following vision and recommendations for actions that align with that vision. All feedback was considered, but not every idea was included as a specific recommendation below. Data from the survey and detailed notes from focus group sessions, including a full list of participant ideas, can be found in **Appendix 4**.

Parks Vision

The Village of New Glarus values its parks and natural areas as a core asset of the community. Future updates and addition to parks should provide safe access and engaging programming for users of all generations and abilities through all seasons. Park space should be used creatively and efficiently. Parks should welcome visitors and connect Villagers with nearby communities. The Village and region's natural resources should be respected and preserved. To fulfill this vision, all members of the community should be invited to contribute however they are able to maintain and improve the Village parks system.

General recommendations

Universal Accessibility

Many of the parks in the Village are perceived to be inaccessible to persons with mobility challenges. The Village should conduct an ADA compliance analysis of all park facilities to guide updates and maintenance investments. A checklist like the ones found on adachecklist.org could be used to identify opportunities for improvement that could be implemented along with other park projects.

Park Maintenance

The survey and focus groups revealed that maintaining existing park facilities is a high priority for many Village residents. Basic repairs to equipment, fields, courts, and amenities should be a priority for the Village's parks budget each year. Winter maintenance like plowing and ice mitigation was discussed as an opportunity for improvement, especially on trails.

Programming

Many focus group participants discussed the importance of programming as a way to get the most value from the parks. In particular, residents requested more winter programming and recreation opportunities for youth and adults since almost all existing programming is for the summer. The Village should explore opportunities for winter programming, possibly by partnering with schools, churches, and other organizations with indoor space.

Selected Projects to Consider

The following list was developed using focus group feedback. Though more ideas were proposed, these fit closely with the goals, objectives, and vision developed in this plan. All projects on this list would need to be explored in more detail for financial feasibility, demand, public desire, and long term effects on the Village.

- Indoor swimming pool
- Teen-specific areas or activities
- Exercise equipment/parcourse
- Updated facilities to accommodate youth sports tournaments
- Ice skating rink with warming hut and grooming
- Groomed cross-country skiing and snowshoeing trails separate from snowmobile areas
- More bike lanes on the roads

Park-Specific Recommendations

Veteran's Park

All of the recommended projects within Veteran's Park should be designed and constructed to meet these criteria: improve accessibility routes for all users, achieve ADA compliance, and improve stormwater management throughout the park. Projects are listed in order of recommended priority. Assessment should be conducted to determine whether complete restructure is necessary to satisfy the recommendations. For example, an assessment of whether the demolition and repavement for the installment of stormwater management infrastructure including gutters adjacent to sidewalks that were just paved in 2015 is necessary or whether amending these sidewalks with the storm water management infrastructure is possible. An ADA inventory should be conducted to help determine the extent of needed bathroom and parking lot improvements. Remodeling the bathrooms and restriping the parking lot may be sufficient.

- Grade and pave the main parking lot. Include a section of porous pavement parking lot spaces.
- Reconstruct the sidewalk system to increase connectivity throughout the park. Install curb and gutter infrastructure as well as sections of porous pavement to facilitate storm water management. Consider incorporating bioswales into the overall design for optimum stormwater management.
- Remodel or replace the public restrooms. Four toilets may sufficiently accommodate current and future populations; six toilets may be more appropriate for future populations.
- Resurface and repurpose the tennis courts into a multi-use sport court to accommodate, for example, tennis courts, pickle-ball courts and basketball courts.
- Remodel or replace the play structure equipment. Evaluate the need to replace the safety surface, and replace the surface if needed.

Include native landscaping and rain gardens where appropriate. A rain garden to manage runoff from the multipurpose sport court, baseball diamond and play structure area should be planted in the low-lying area central to these three amenities. Berms and walking paths should be strategically placed for the enjoyment of the garden by park visitors. Identify other appropriate locations for native landscaping throughout the park. Consider including threatened and endangered indigenous plant species and habitat for threatened and endangered indigenous animal species.

Install information signage at the entrance to the park that includes a map of the park and information about the plants and animal species visitors can expect to observe at various locations throughout the park.



Veterans Park Costs:

The following budget is based on project-by-project estimates that were calculated by considering the costs of similar projects recently completed in the region (**Appendix 10**). Costs can be considerably reduced by combining small projects into larger ones or even overhauling the entire park as one large project. Combining efforts with other intentions can help to reduce costs. For example, Veteran's Park is a common location for students to meet their caretakers after school, and park improvement may be compatible with Safe-Routes-to-School efforts. Complete Streets is another example of a possible project mash-up—it would make sense to incorporate shared sidewalk and drainage infrastructure when redesigning the adjacent road to meet Complete Streets guidelines.

Project	Estimated cost	Additional annual maintenance
Parking lot	\$85,000	None
Sidewalk, curb and gutter	\$32,000	None
Restrooms	\$150,000	None
Multi-use court	\$103,000	None
Playground	\$55,000	None
Green Infrastructure	\$40,000	\$2,000
Total Estimated Cost	\$495,000	\$2,000



Candy Cane Park

Candy Cane Park is in need of a complete reconstruction, including excavation, safety surface replacement, and installation of new equipment and ADA accessibility components. The cost of this complete overhaul is estimated at \$55,000 using the same estimate as was used for the playground estimate for Veteran's Park.



Glarner Park

Plans are already underway to improve the youth baseball field at Glarner Park. The Parks Commission should continue partnering with the New Glarus Youth Baseball Association to plan and fund future projects at this park.



Village Park

Village Park is the site of many New Glarus events and festivals throughout the year. Expanded electrification throughout the park could improve park events by allowing more vendors/activities that rely on electricity as well as improve safety by not having to run extension cords across the park. The playground surface is currently maintained with woodchips, but should be updated to a surface materials that promotes safe accessibility.



Valle Tell & Hoesly Parks

Hoesly Pond Park and Valle Tell Soccer Park are both located on the east side of State Highway 69, across from the main commercial and residential areas of the Village. Village residents in the focus groups expressed the need for a safer crossing across State Highway 69. Focus group participants also expressed need for greater connectivity from Valle Tell Soccer Park to the New Glarus Brewery along the Little Sugar River.

Therefore, it is recommended that the Village of New Glarus collaborate with State Department of Transportation and Department of Natural Resources to improve connectivity from Hoesly Pond and Valle Tell Soccer Park to key Village destinations and residential areas. This will allow for greater use of the park space and integrate Village plans with the SCORP goals of integrating outdoor recreation with tourism goals and increasing access to outdoor recreation areas.

Focus group participants also expressed a need for benches at Hoesly Pond Park. Partnerships with community groups and residences could be used to acquire benches, either as memorial benches or donations from local organizations. Finally, it is recommended that Hoesly Pond be considered for use as an ice skating rink in the winter. Focus group respondents requested increased programming and winter activities for Village parks. Additionally, the 2010 CORP listed an ice skating rink at Veteran's Memorial Park as a short-term priority. Snow could be cleared from the ice on Hoesly in the winter to meet this need. Use, however, may be dependent on ease-of-access and would therefore be improved by creating a safer crossing of State Highway 69.



Trails

The state trails that run through New Glarus are treasured by all who use them. During the summer they are ideal for walkers, runners, and bikers. In the winter, snowmobiling is allowed on the Ice Age trail, so walkers prefer the Sugar River trail during the winter but stated it is under maintained and feels dangerous to use. The Village should work with the State to determine if better winter maintenance could be employed on the trails.



Opportunities for Partnerships & Collaboration

Collaboration with local groups and government agencies presents an opportunity to help the Parks & Recreation Committee achieve their goals. Volunteer labor, money or material donations, and shared facilities are potential outcomes from collaborative partnerships.

The Committee should identify and publicize opportunities where local groups can volunteer their time to assist the Village with seasonal maintenance, weeding, and general clean up. Programs like Adopt-a-Park or Adopt-a-Flower Garden by individuals or community groups or businesses have proven successful in other area communities. These projects contribute to the beautification of the New Glarus parks and allow parks staff to work on other priority projects.

In some cases, groups or individuals may be willing to fundraise or donate requested items to New Glarus' parks. One example would be park benches or picnic tables since they are financially feasible and can be added one at a time. Memorial benches or trees are another potential avenue to receive donated items.

New Glarus is a small community and should pursue shared facilities with other agencies in the area. Should the school district decide to expand recreational facilities, there is an opportunity for financial collaboration with the Village if the new facilities can be used by the public during times where the school will not be using it. These collaborations may also be possible with the Town of New Glarus, Green County or other surrounding communities.

Future Growth Accommodation

According to the New Glarus Parks Map on page 10 all current residential areas within the Village of New Glarus are located a half-mile or less from a current Village park. However, the future land use map in the Village's 2016 Comprehensive Plan has each of these areas planned for use as 'Neighborhoods'. The plan specifies that this land use category should include amenities such as parks, open spaces, and bicycle/pedestrian access. Additionally, Village of New Glarus Ordinance §265-48 specifies that new subdivision development within the Village be required to include land dedication or a fee-in-lieu of land dedication to accommodate added expenses from the Village due to increased population.

Therefore, it is recommended that development in areas of the Village lying outside of the half-mile radius from current parks be required to dedicate land for park space, rather than a fee-in-lieu, to ensure that all residences in the Village remain within a half-mile of a Village Park. This will also ensure that all future subdivision development will be consistent with the 2016 Comprehensive Plan future zoning map and land use categories.

Categorizing Priorities by Level of Investment



Low Investment Priorities

- Complete ADA Analysis of Village Parks
- Add Benches and Tables to Hoesly Pond
- Begin Discussions with WisDOT to Assess Options for Highway 69 Crossing
- Incorporate Additional Maintenance Funding in Annual Park Budget
- Work with Residents to Determine Appropriate Winter Programming for Parks Such as Ice Rink at Hoesly Pond
- Collaborate with Local Organizations, WDNR, and the Town of New Glarus to Increase Resource Efficiency of Park Improvements
- Incorporate Land Dedication Requirement in all New Development Located Further Than ½ Mile From a Village Park

Medium Investment Priorities

- Design and Implement Green Infrastructure in Veteran's Memorial and Village Park to Improve Drainage

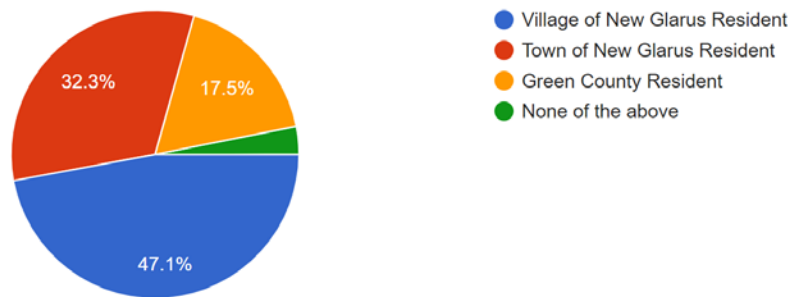
High Investment Priorities

- Replace Play Equipment and Surfaces at Candy Cane Park
- Reconstruct Tennis Courts at Veteran's Memorial Park to Include Improved Surfaces and Pickleball
- Replace Play Equipment and Surfaces at Veteran's Memorial Park
- Reconstruct Aging Infrastructure at Veteran's Memorial Park, Including the Parking Lot and Restroom Facilities

Appendix 1: Survey Questions and Responses

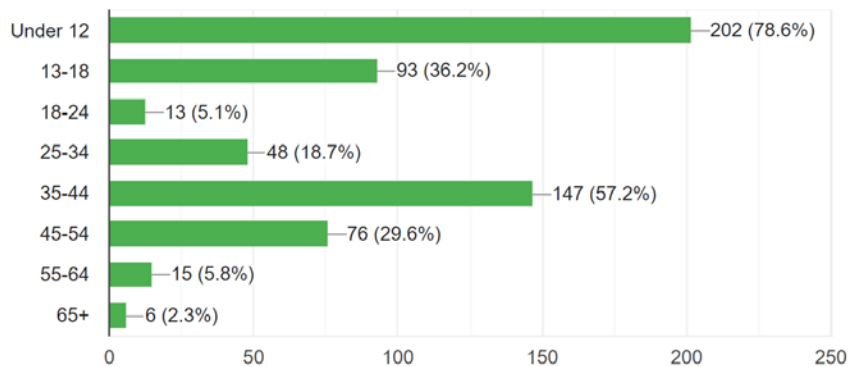
Please select the residency option that best describes you

257 responses



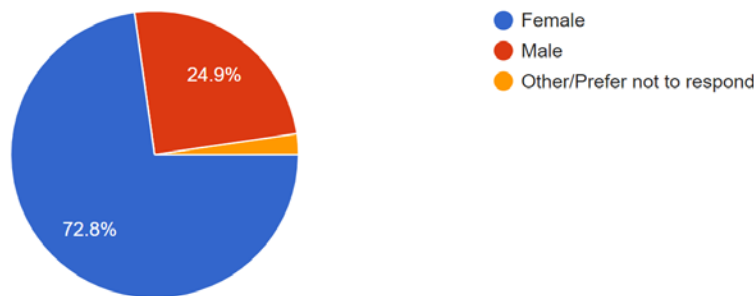
Does your household contain members of the following age categories, including yourself? Select all that apply.

257 responses



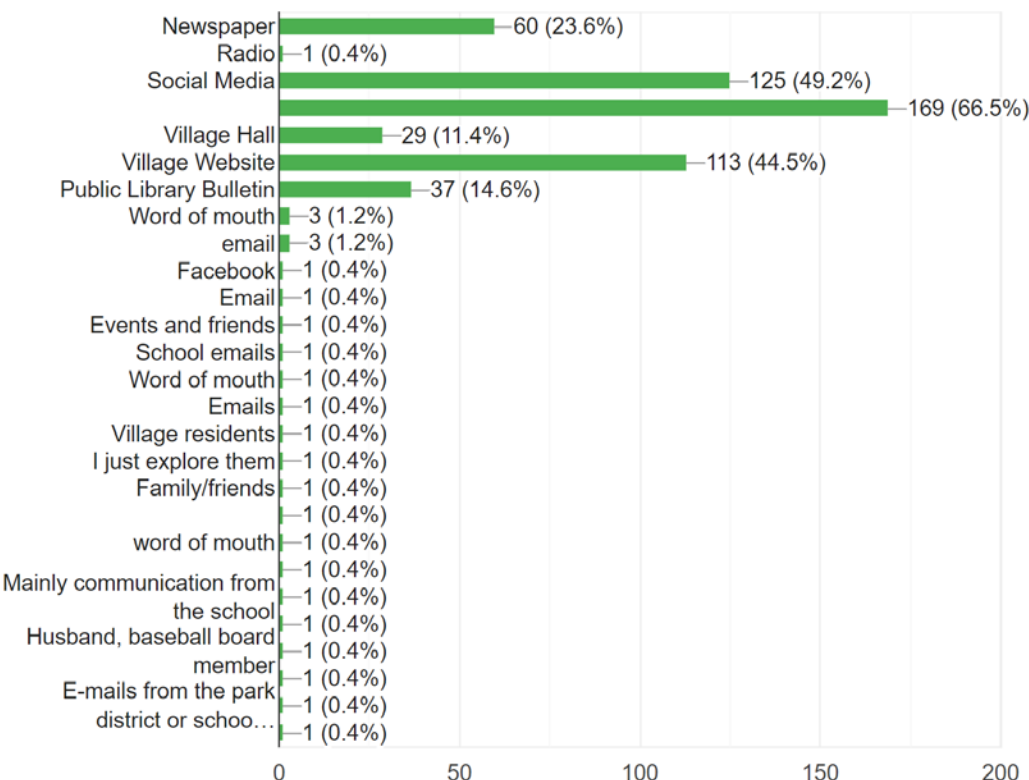
What is your gender?

257 responses



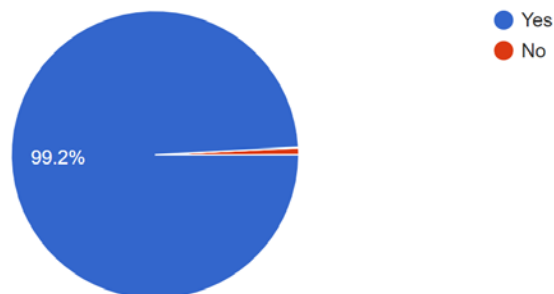
How do you currently learn about Village parks and programs? Check all that apply

254 responses



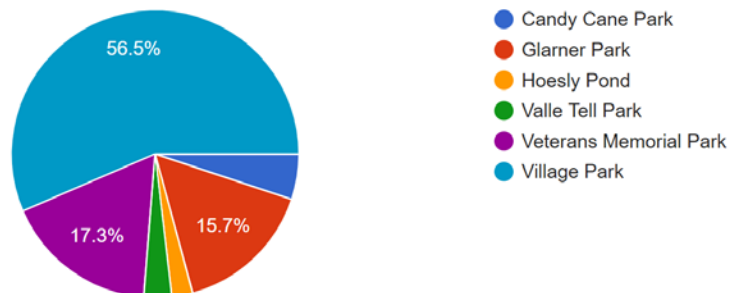
Have you or a member of your family visited a New Glarus Park in the past 12 months?

254 responses



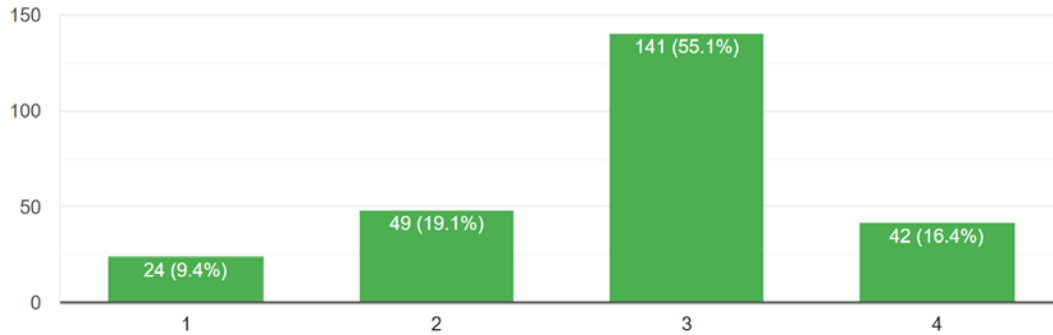
Which park do you most frequently visit?

255 responses

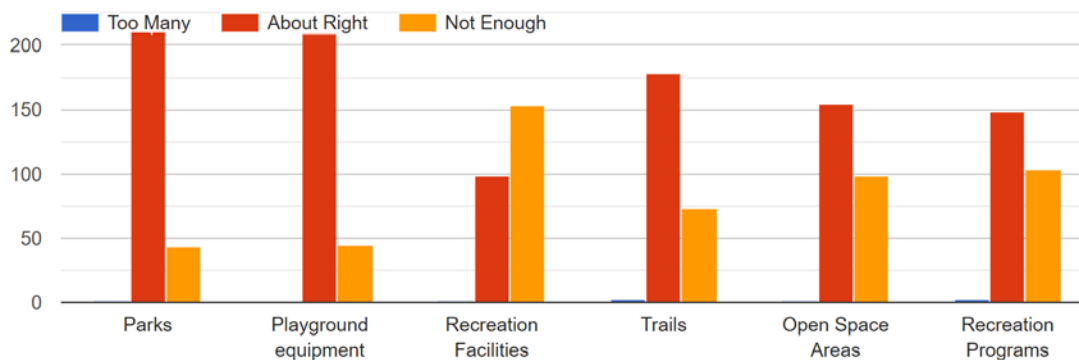


How would you rate your satisfaction with the existing parks facilities and programs? (very dissatisfied, dissatisfied, satisfied, very satisfied)

256 responses

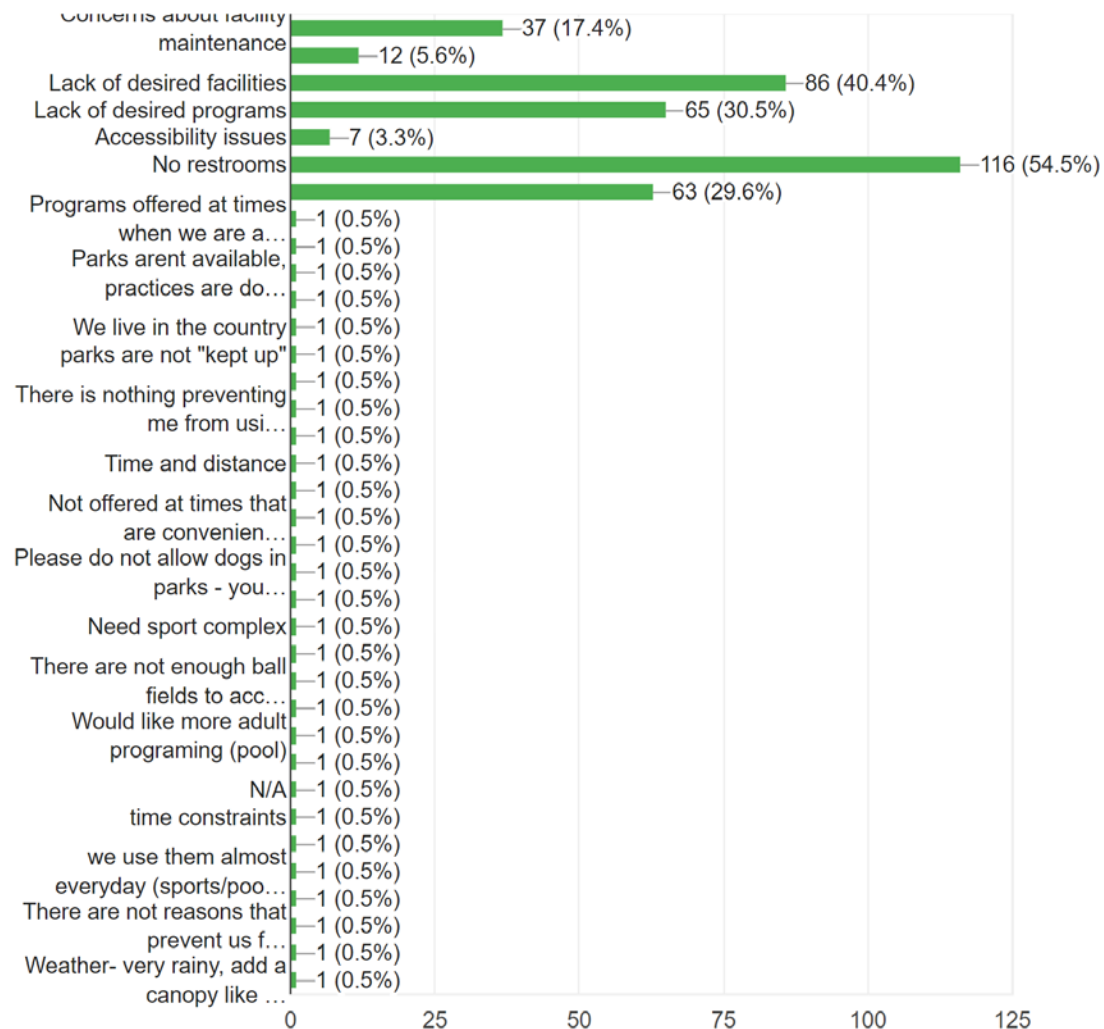


Please provide your opinion on the number of facilities offered by the Village for each of the type of facilities listed below.



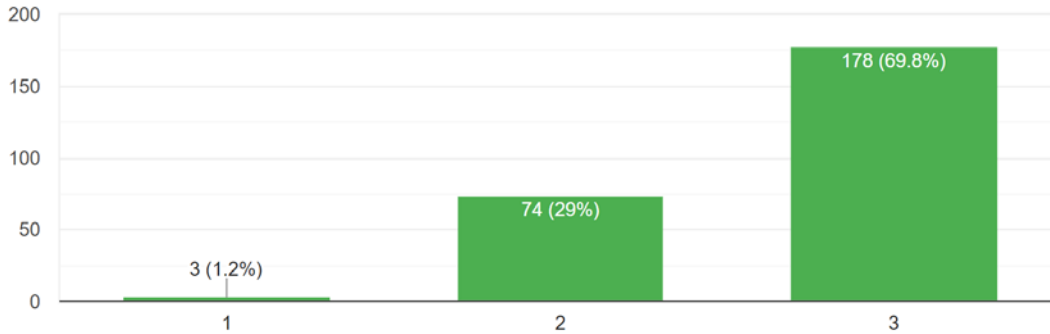
Check all the reasons that prevent you or members of your household from using Village facilities or programs:

213 responses

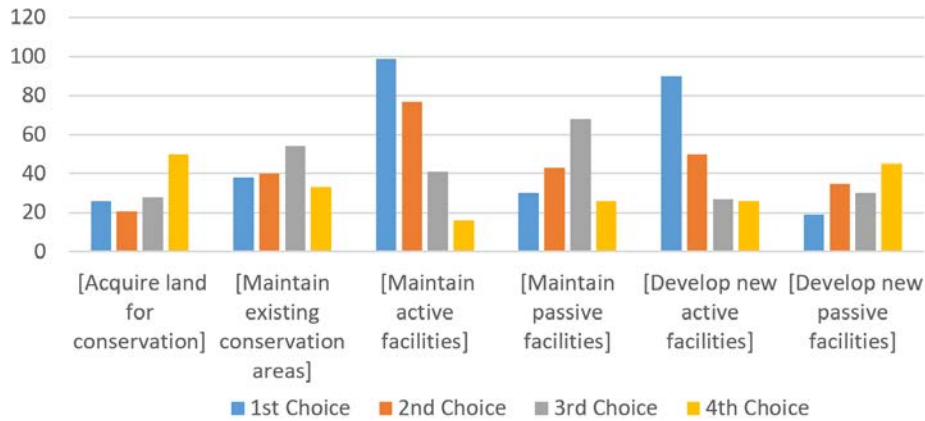


Compared to other village priorities, how important is it to maintain and improve parks, trails, open space, recreation facilities and services? (Not important, somewhat important, very important)

255 responses

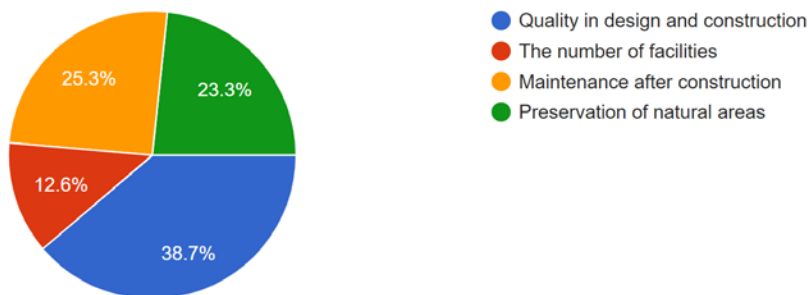


Given limited resources, please select your top four priorities for future park development.



What is the most important consideration regarding future parks?

253 responses



Appendix 2: Organizations Contacted for Focus Groups

Organization Name	Attended Focus Group?
Small World Daycare	
Lion Club	Attended Focus Group
FFA Alumni	
Baseball Association	
Sugar River Soccer	
School Board	Attended Focus Group
Library Board	Attended Focus Group
NG Youth Comittee	Attended Focus Group
Grace Church	
Swiss UCC	
New Glarus Bible Church	
Shepard of the Hills Lutheran	Attended Focus Group

Appendix 3: Focus Group Questions

1. What benefits do you think parks bring to a community?
2. What have you seen in other parks that you really like?
3. What role do you see the parks *specifically in New Glarus* playing in the community?
4. What is working well in New Glarus, in terms of the role you see the parks playing in New Glarus?
5. What is not working well, in terms of the role you see the parks playing in New Glarus?
6. What recreation facilities and programs do you think are missing?
7. Most important consideration: many people said "Quality in design and construction". What does that mean to you? User-friendly, ADA, aesthetic, other?
8. Preservation of natural areas - what types of things do you want to preserve and what activities/programming would you want to see in those spaces?
9. How else could New Glarus Parks change to meet these goals outlined above?
10. If you could make any one change, what would it be?

Appendix 4: Focus Group Comments Summary

Benefits/Role of Parks

- Gathering place, brings people together, helps make new social connections
- Good for businesses
- Draws people from outside the Village (town, region), looks nice and inviting to people passing through
- Space for festivals
- Good place for multiple generations
- Gives kids something to do in the summer, gets kids off the couch, somewhere for families to go that's free and healthy
- Provide weather moderation (shade, wind breaks, open space, something different to look at)
- Green space

Seen in other parks

- Keep it small and simple
- Don't like pedestrian bridges over highways
- Belleville Community Center is example of good indoor public space
- Handicap-accessible equipment and features
- Lake Montezian benches and maintenance
- People from New Glarus go to Monroe to enjoy Cheese Park
- Duluth has groomed snowshoeing and skiing in most parks

Working well

- Maintenance is great, well cared-for
- Little free library
- Walking path toward New Glarus woods
- Attracts visitors who pass through to stop and explore
- Playground in Village park is nice
- Small neighborhood parks are nice because you don't have to be in the center of town to enjoy it
- Sporting events and recreational programs

Not working well

- [Lack of] recycling in parks
- Vandalism in poorly-lit areas
- No walking path heading north
- [Lack of] benches, lights, etc along sugar river extension
- No community center, fitness facility, gathering rooms - especially important in winter
- Public restrooms very limited, people prefer flush-toilets over portable restrooms
- Schedules for park use should be posted

- More multiple uses in parks, for example using the outfield of the ballparks for car/art shows
- Limited winter activities

Active Recreation

- Centralize soccer, baseball, softball fields
- Joint planning between school facilities and Village facilities
- Indoor swimming pool - could be used by village, town, and school. Currently have to travel to Monroe for indoor pool. Include Zero In/Splash Park for accessibility
- More winter activities are needed, both indoor and outdoor
- Somewhere to skateboard
- Exercise equipment/stations (parcourse)
- Frisbee golf
- Facility for tournaments (could share with town)
- Ice skating rink with warming hut and ice maintenance (plowing, zamboni)
- Trails for snowshoeing and skiing that is separate from snow mobiles
- More bike lanes for visitors biking in on the trails
- More walking/running areas - current options are bike trails or streets

Quality in Design & Construction

- Safety, especially on jungle gyms
- Lighting
- Accessibility
- Maintenance, especially of restrooms
- Up to date, nice aesthetics
- Examples: [Fixing the] "raggity" shingles on the dug out. A small expense to send a message we are proud of our parks.
- Durability

Preserving Natural Areas

- Sugar River
- Wildlife - encourage its presence and let people sit and enjoy it
- State park in walking distance
- Bike trail
- Hosely Pond
- New Glarus woods

Other Requests

- More ability for businesses to participate in festivals (food stalls, vendor booths, etc)
- Host festivals across all parks (at the same time or rotate depending on festival) so it spreads the benefits and burdens more evenly
- Structure for local organizations to determine projects they can partner with for funding and implementing

- Memorials as a funding opportunity for benches and beautification projects
- Desire to have all stakeholders represented, not just the loudest voices
- Strong education for community about resources and rules
- Places for banners for events
- Somewhere for kids to go in the winter
- More variety of activities for older kids
- Connect the village with the town parks, for example a safe way for kids to ride bikes or walk to town parks
- Trail that goes along the road up to the woods is not well maintained, especially in winter when it gets icy
- Partnerships with state, town, county, region. For example, coordination with state for where trails are
- More programming
- More options for seniors to use spaces
- Try to use Telle Grounds and Shooting Park for public parks (currently privately owned but under-used)

Village Park

- Want more electricity spread throughout park to reduce generators and extension cords during festivals
- Drainage near basketball courts is an issue

Glarner Park

Veterans Park

- Maintenance of tennis court surfaces [is lacking]
- Tennis courts could be mixed use (already used for multiple sports, but would need to be updated to accommodate the other sports properly - tennis, pickleball, dodgeball)
- No place to play basketball

Valle Tell

- [Need] connection of Valle Tell area to new development and brewery

Hosely

- Need a path across highway to Hosely
- Need benches
- Warming hut and ice maintenance to use pond as ice skating rink

Candy Cane

- Looks old, unsure of quality/safety

Appendix 5: A Brief Economic Analysis of Green County

Location Quotient Analysis

Location Quotient (LQ)	Green County (GC)	Wisconsin (WI)	GC 2015 LQ WI nation	GC	WI	GC lq WI nation
Industry	2015 percent employment	2015 percent employment		2017 percent employment	2017 percent employment	2017
Business and Financial Operations Occupations	0.03	0.05	0.69	0.03	0.05	0.61
Management Occupations	0.04	0.05	0.84	0.03	0.05	0.65
Computer and Mathematical Occupations	0.02	0.03	0.69	0.02	0.03	0.72
Architecture and Engineering Occupations	0.01	0.02	0.80	0.01	0.02	0.60
Production Occupations	0.16	0.01	22.90	0.21	0.01	30.33
Life, Physical, and Social Science Occupations	0.00	0.01	0.32	0.01	0.01	0.36
Community and Social Services Occupations	0.01	0.01	1.48	0.01	0.00	1.54
Legal Occupations	0.00	0.06	0.03	0.00	0.06	0.02
Education, Training, and Library Occupations	0.08	0.01	6.76	0.09	0.01	7.31
Transportation and Material Moving Occupations	0.06	0.06	1.02	0.05	0.06	0.89
Arts, Design, Entertainment, Sports, and Media Occ	0.01	0.03	0.29	0.00	0.03	0.10
Healthcare Practitioners and Technical Occupations	0.06	0.02	3.19	0.07	0.02	3.75
Healthcare Support Occupations	0.02	0.09	0.29	0.03	0.09	0.30
Protective Service Occupations	0.02	0.03	0.76	0.02	0.03	0.69
Food Preparation and Serving Related Occupations	0.05	0.04	1.21	0.04	0.04	1.05
Building and Grounds Cleaning and Maintenance Occu	0.03	0.10	0.33	0.03	0.09	0.35
Personal Care and Service Occupations	0.02	0.15	0.11	0.01	0.15	0.09
Sales and Related Occupations	0.10	0.00	58.60	0.07	0.00	39.08
Office and Administrative Support Occupations	0.21	0.03	6.08	0.20	0.04	5.67
Farming, Fishing, and Forestry Occupations	0.00	0.04	0.02	0.00	0.04	0.03
Construction and Extraction Occupations	0.02	0.11	0.14	0.02	0.12	0.20
Installation, Maintenance, and Repair Occupations	0.03	0.08	0.46	0.04	0.07	0.48
Total				1.00		

This location quotient analysis demonstrates industries in Green County that employ more than their expected local share of workers in that industry compared to the rest of the state of Wisconsin with quotients greater than 1, and industries that employ less than their share of workers in comparison with the rest of the state of Wisconsin with quotients of less than 1.

National Growth Effect Analysis

National Growth Effect	GC 2015 total employment	X expected growth rate compared to state (2%)	GC expected total employment (total employment + expected growth rate)	GC 2017 total employment	difference
Industry					
Business and Financial Operations Occupations	510.00	9.86	519.86	460.00	-59.86
Management Occupations	630.00	12.17	642.17	460.00	-182.17
Computer and Mathematical Occupations	280.00	5.41	285.41	300.00	14.59
Architecture and Engineering Occupations	240.00	4.64	244.64	170.00	-74.64
Production Occupations	2630.00	50.82	2680.82	3270.00	589.18
Life, Physical, and Social Science Occupations	70.00	1.35	71.35	80.00	8.65
Community and Social Services Occupations	120.00	2.32	122.32	120.00	-2.32
Legal Occupations	30.00	0.58	30.58	20.00	-10.58
Education, Training, and Library Occupations	1360.00	26.28	1386.28	1350.00	-36.28
Transportation and Material Moving Occupations	940.00	18.16	958.16	820.00	-138.16
Arts, Design, Entertainment, Sports, and Media Occ	120.00	2.32	122.32	40.00	-82.32
Healthcare Practitioners and Technical Occupations	1000.00	19.32	1019.32	1130.00	110.68
Healthcare Support Occupations	400.00	7.73	407.73	410.00	2.27
Protective Service Occupations	360.00	6.96	366.96	310.00	-56.96
Food Preparation and Serving Related Occupations	810.00	15.65	825.65	660.00	-165.65
Building and Grounds Cleaning and Maintenance Occu	520.00	10.05	530.05	520.00	-10.05
Personal Care and Service Occupations	260.00	5.02	265.02	210.00	-55.02
Sales and Related Occupations	1640.00	31.69	1671.69	1120.00	-551.69
Office and Administrative Support Occupations	3410.00	65.90	3475.90	3190.00	-285.90
Farming, Fishing, and Forestry Occupations	10.00	0.19	10.19	20.00	9.81
Construction and Extraction Occupations	260.00	5.02	265.02	360.00	94.98
Installation, Maintenance, and Repair Occupations	560.00	10.82	570.82	550.00	-20.82
Total	16160.00	312.28	16472.28	15570.00	-902.28

This national growth effect analysis is a comparison of the actual job growth in each industry in Green County compared with the expected job growth calculated by regional (the state of Wisconsin) total growth rate. Industries that outperform the state have a positive difference, and industries that are not keeping up with the total growth rate in Wisconsin have negative differences.

Industry Mix Effect Analysis

Industry Mix Effect	WI 2015 total employment	WI 2017 total employment	total change	percent change	Minus 2%	GC 2015 total employment	expected industry growth	total expected jobs in industry	GC 2017 jobs in industry	difference
Industry										
Business and Financial Operations Occupations	126690.00	137490.00	10740.00	0.08	0.07	510.00	33.38	543.38	460.00	-83.38
Management Occupations	127880.00	129080.00	1200.00	0.01	-0.01	630.00	-6.26	623.74	460.00	-163.74
Computer and Mathematical Occupations	69890.00	76090.00	6690.00	0.10	0.08	280.00	21.58	301.58	300.00	-1.58
Architecture and Engineering Occupations	51690.00	51220.00	-470.00	-0.01	-0.03	240.00	-6.82	233.18	170.00	-63.18
Production Occupations	19700.00	19560.00	-140.00	-0.01	-0.03	2630.00	-69.51	2560.49	3270.00	709.51
Life, Physical, and Social Science Occupations	37690.00	40750.00	3070.00	0.08	0.06	70.00	4.35	74.35	80.00	5.65
Community and Social Services Occupations	13870.00	14120.00	250.00	0.02	0.00	120.00	-0.16	119.84	120.00	0.16
Legal Occupations	163440.00	163970.00	530.00	0.00	-0.02	30.00	-0.48	29.52	20.00	-9.52
Education, Training, and Library Occupations	34500.00	33520.00	-980.00	-0.03	-0.05	1360.00	-64.91	1295.09	1350.00	54.91
Transportation and Material Moving Occupations	158480.00	166510.00	8030.00	0.05	0.03	940.00	29.46	969.46	820.00	-149.46
Arts, Design, Entertainment, Sports, and Media Occ	72130.00	71200.00	-930.00	-0.01	-0.03	120.00	-3.87	116.13	40.00	-76.13
Healthcare Practitioners and Technical Occupations	53820.00	54690.00	870.00	0.02	0.00	1000.00	-3.16	996.84	1130.00	133.16
Healthcare Support Occupations	235730.00	244680.00	8950.00	0.04	0.02	400.00	7.46	407.46	410.00	2.54
Protective Service Occupations	80730.00	81740.00	1010.00	0.01	-0.01	360.00	-2.45	357.55	310.00	-47.55
Food Preparation and Serving Related Occupations	114730.00	114470.00	-260.00	0.00	-0.02	810.00	-17.49	792.51	660.00	-132.51
Building and Grounds Cleaning and Maintenance Occu	270050.00	266090.00	-3960.00	-0.01	-0.03	520.00	-17.67	502.33	520.00	17.67
Personal Care and Service Occupations	412530.00	409730.00	-2800.00	-0.01	-0.03	260.00	-6.79	253.21	210.00	-43.21
Sales and Related Occupations	4800.00	5200.00	400.00	0.08	0.06	1640.00	104.97	1744.97	1120.00	-624.97
Office and Administrative Support Occupations	96220.00	102040.00	5820.00	0.06	0.04	3410.00	140.36	3550.36	3190.00	-360.36
Farming, Fishing, and Forestry Occupations	104970.00	109800.00	5490.00	0.05	0.03	10.00	0.33	10.33	20.00	9.67
Construction and Extraction Occupations	314710.00	326800.00	12090.00	0.04	0.02	260.00	4.96	264.96	360.00	95.04
Installation, Maintenance, and Repair Occupations	208480.00	205500.00	-1980.00	-0.01	-0.03	560.00	-16.14	543.86	550.00	6.14
Total	2771620.00	2825180.00	53560.00	0.02	0.00	16160.00	0.00		15570.00	

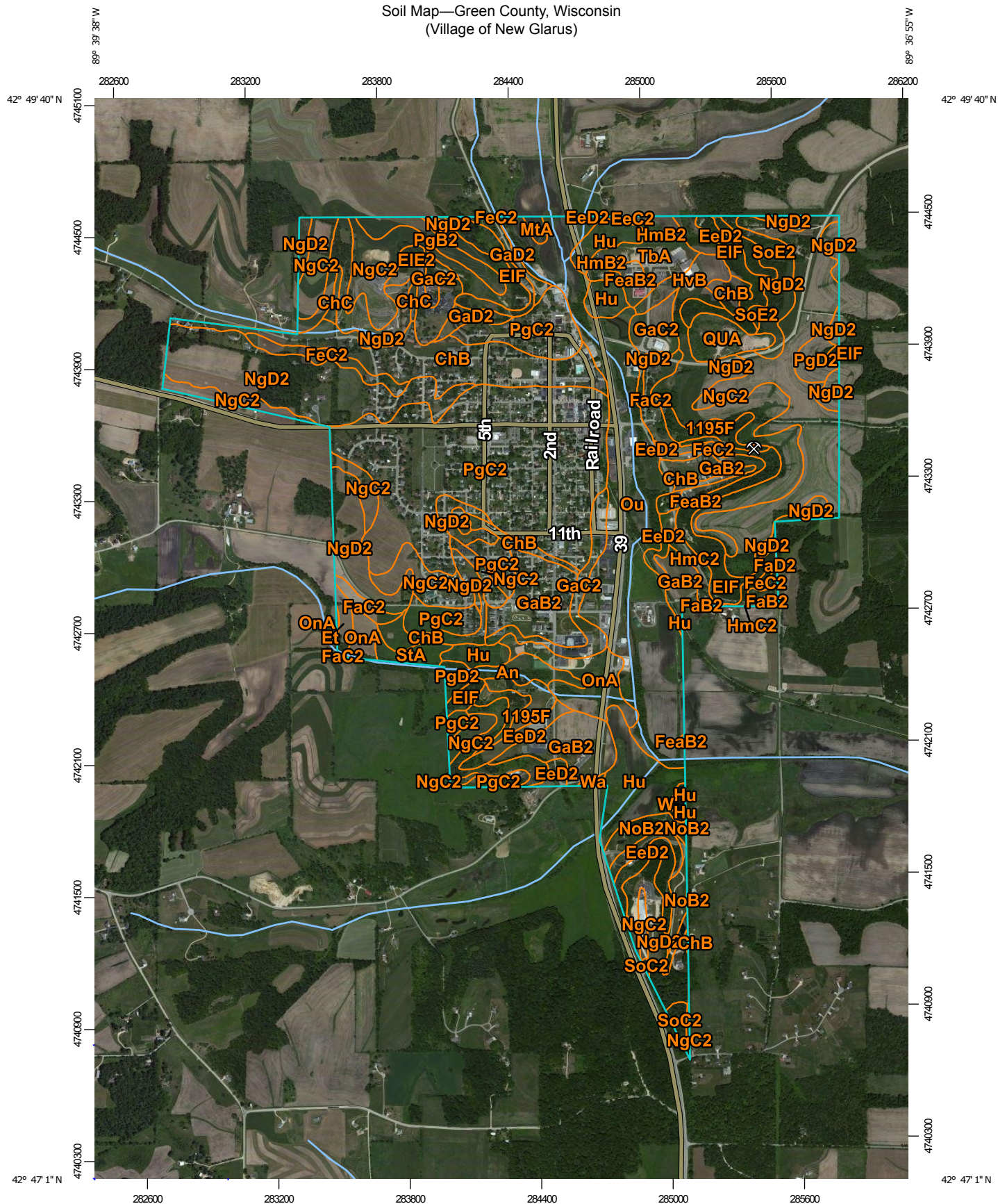
This industry mix effect analysis compares growth in each industry of Green County to growth in the same industry in Wisconsin. Industries that are growing faster than the same industry in Wisconsin have positive differences, and industries whose growth is not keeping up with the rate of the same industry in the rest of Wisconsin have negative differences.

Results: Industries above center are outperforming the rest of the state, and industries left of center are growing at a higher rate than the same industries in the rest of Wisconsin. Industries in decline (to the right of center) are declining at a faster rate than the growth rate of growing industries, as demonstrated by a net job loss in Green County.



*All data used in this analysis were collected from the State of Wisconsin Department of Workforce Development, <https://www.jobcenterofwisconsin.com/wisconomy/>, accessed November 2018

Soil Map—Green County, Wisconsin (Village of New Glarus)



Map Scale: 1:23,900 if printed on A portrait (8.5" x 11") sheet.



Map projection: Web Mercator Corner coordinates: WGS84 Edge tics: UTM Zone 16N WGS84



**Natural Resources
Conservation Service**


Web Soil Survey
National Cooperative Soil Survey

11/19/2018
Page 1 of 4


Soil Map—Green County, Wisconsin
(Village of New Glarus)

MAP LEGEND

Area of Interest (AOI)

 Area of Interest (AOI)

Soils

 Soil Map Unit Polygons

 Soil Map Unit Lines

 Soil Map Unit Points

Special Point Features



Blowout



Borrow Pit



Clay Spot



Closed Depression



Gravel Pit



Gravelly Spot



Landfill



Lava Flow



Marsh or swamp



Mine or Quarry



Miscellaneous Water



Perennial Water



Rock Outcrop



Saline Spot



Sandy Spot



Severely Eroded Spot



Sinkhole



Slide or Slip



Sodic Spot



Spoil Area



Stony Spot



Very Stony Spot



Wet Spot



Other



Special Line Features

Water Features



Streams and Canals

Transportation



Rails



Interstate Highways



US Routes



Major Roads



Local Roads

Background



Aerial Photography

MAP INFORMATION

The soil surveys that comprise your AOI were mapped at 1:12,000.

Please rely on the bar scale on each map sheet for map measurements.

Source of Map: Natural Resources Conservation Service

Web Soil Survey URL:

Coordinate System: Web Mercator (EPSG:3857)

Maps from the Web Soil Survey are based on the Web Mercator projection, which preserves direction and shape but distorts distance and area. A projection that preserves area, such as the Albers equal-area conic projection, should be used if more accurate calculations of distance or area are required.

This product is generated from the USDA-NRCS certified data as of the version date(s) listed below.

Soil Survey Area: Green County, Wisconsin

Survey Area Data: Version 19, Sep 11, 2018

Soil map units are labeled (as space allows) for map scales 1:50,000 or larger.

Date(s) aerial images were photographed: Apr 29, 2011—Jun 13, 2011

The orthophoto or other base map on which the soil lines were compiled and digitized probably differs from the background imagery displayed on these maps. As a result, some minor shifting of map unit boundaries may be evident.

Map Unit Legend

Map Unit Symbol	Map Unit Name	Acres in AOI	Percent of AOI
1195F	Elk mound-Northfield complex, 30 to 60 percent slopes, very rocky	22.8	1.6%
An	Arenzville silt loam, 0 to 3 percent slopes, occasionally flooded	11.5	0.8%
ChB	Chaseburg silt loam, moderately well drained, 2 to 6 percent slopes	91.1	6.5%
ChC	Chaseburg silt loam, 6 to 12 percent slopes, rarely flooded	3.2	0.2%
EeC2	Eleva sandy loam, 6 to 12 percent slopes, moderately eroded	1.1	0.1%
EeD2	Eleva sandy loam, 12 to 20 percent slopes, moderately eroded	27.6	2.0%
EIE2	Elk mound sandy loam, 20 to 30 percent slopes, moderately eroded	15.2	1.1%
EIF	Elk mound sandy loam, 30 to 45 percent slopes	54.2	3.9%
Et	Ettrick silt loam, 0 to 2 percent slopes, frequently flooded	4.5	0.3%
FaB2	Fayette silt loam, 2 to 6 percent slopes, moderately eroded	0.8	0.1%
FaC2	Fayette silt loam, 6 to 12 percent slopes, moderately eroded	13.9	1.0%
FaD2	Fayette silt loam, 12 to 20 percent slopes, moderately eroded	0.1	0.0%
FeaB2	Festina silt loam, 1 to 6 percent slopes, moderately eroded	8.3	0.6%
FeC2	Fayette silt loam, valleys, 6 to 12 percent slopes, moderately eroded	20.0	1.4%
GaB2	Gale silt loam, 2 to 6 percent slopes, moderately eroded	69.2	4.9%
GaC2	Gale silt loam, 6 to 12 percent slopes, moderately eroded	37.3	2.7%
GaD2	Gale silt loam, 12 to 20 percent slopes, moderately eroded	10.5	0.7%

Map Unit Symbol	Map Unit Name	Acres in AOI	Percent of AOI
HmB2	Hixton loam, 2 to 6 percent slopes, moderately eroded	4.9	0.3%
HmC2	Hixton loam, 6 to 12 percent slopes, moderately eroded	14.4	1.0%
Hu	Houghton mucky peat, 0 to 2 percent slopes	52.0	3.7%
HvB	Huntsville silt loam, 2 to 6 percent slopes, rarely flooded	9.6	0.7%
MtA	Muscatine silt loam, benches, 0 to 3 percent slopes	2.2	0.2%
NgC2	Newglarus silt loam, moderately deep, 6 to 12 percent slopes, moderately eroded	183.1	13.0%
NgD2	Newglarus silt loam, moderately deep, 12 to 20 percent slopes, moderately eroded	252.2	17.9%
NoB2	Northfield loam, 2 to 6 percent slopes, moderately eroded	9.0	0.6%
OnA	Orion silt loam, 0 to 3 percent slopes, occasionally flooded	29.4	2.1%
Ou	Otter silt loam, frequently flooded	151.7	10.8%
PgB2	Palsgrove silt loam, 2 to 6 percent slopes, moderately eroded	11.6	0.8%
PgC2	Palsgrove silt loam, 6 to 12 percent slopes, moderately eroded	235.6	16.8%
PgD2	Palsgrove silt loam, 12 to 20 percent slopes, moderately eroded	9.5	0.7%
QUA	Quarry	13.5	1.0%
SoC2	Sogn silt loam, 2 to 12 percent slopes, moderately eroded	3.3	0.2%
SoE2	Sogn silt loam, 12 to 30 percent slopes, moderately eroded	7.4	0.5%
StA	Stronghurst silt loam, benches, 0 to 3 percent slopes	6.6	0.5%
TbA	Tama silt loam, terrace, driftless, 0 to 2 percent slopes	15.6	1.1%
W	Water	2.3	0.2%
Wa	Walkill silt loam, frequently flooded	0.8	0.1%
Totals for Area of Interest		1,405.9	100.0%



Village of New Glarus Floodplain Map



Legend

- Dams**
 - Yellow square: Dams with FERC License
 - Red square: Dams
- Record Flood Levels**
 - Red dot: Record Flood Levels
- Floodplain Analysis Lines**
 - Yellow line: Other
 - Orange line: Flood Insurance Study
 - Purple line: Letter of Map Revision
 - Red line: Case By Case Analysis
 - Red line: Bridge
- Floodplain Analysis Points**
 - Yellow dot: Other
 - Orange dot: Flood Insurance Study
 - Purple dot: Letter of Map Revision
 - Red dot: Case By Case Analysis
 - Red dot: Bridge
- Cross-Sections**
 - Black line: Cross-Sections
- Flood Hazard Boundaries**
 - Grey line: Other Boundaries
 - Red line: Limit Lines
 - Red line: SFHA / Flood Zone Boundary
- Flood Hazard Zones**
 - Light blue: 1% Annual Chance Flood Hazard
 - Orange: Regulatory Floodway
 - Grey: Special Floodway
 - Yellow: Area of Undetermined Flood Hazard
 - Orange: 0.2% Annual Chance Flood Hazard
 - Grey: Future Conditions 1% Annual Chance Flood Hazard
 - Orange: Area with Reduced Risk Due to Levee
- County Boundary**
 - Black line: County Boundary
- Municipality**
 - Yellow line: Municipality
- State Boundaries**
 - Red line: State Boundaries

Notes

0.5 0 0.25 0.5 Miles

NAD_1983_HARN_Wisconsin_TM

1: 15,840

DISCLAIMER: The information shown on these maps has been obtained from various sources, and are of varying age, reliability and resolution. These maps are not intended to be used for navigation, nor are these maps an authoritative source of information about legal land ownership or public access. No warranty, expressed or implied, is made regarding accuracy, applicability for a particular use, completeness, or legality of the information depicted on this map. For more information, see the DNR Legal Notices web page: <http://dnr.wi.gov/legal/>

Appendix 8: List of Priorities from 2010 Village of New Glarus CORP

Short Term Priorities

1. Fix Village Park Drainage Problem
- 2. Replace/create a play area in Village Park.**
3. Make Village Park facilities universally accessible
- 4. Relocate the Village Park basketball court within the park**
5. Make the old substation site usable
6. Fix drainage problems at Veteran's Memorial Park
7. Replace/enlarge and relocate Village Park shelter.
8. Replace Candy Cane Park equipment, add safe surfacing and landscaping.
9. Make Candy Cane Park facilities universally accessible
- 10. Pave, delineate edge and organize traffic pattern of Veteran's Memorial Park parking lot**
11. Add preschool equipment and safe surfacing to Veteran's Memorial Park. Create a setting for the play equipment.
12. Make Veteran's Memorial Park facilities universally accessible
13. Add aesthetic features to Village Park in a Swiss theme
- 14. Add sidewalk or other form of division between park and parking at Village Park on north and south edges**
15. Make Glarner Park facilities universally accessible
16. Create space definition with plantings at Veteran's Memorial Park plant the wet areas and create a picnic area.
17. Add an ice skating rink to Veteran's Memorial Park.

Long Term Priorities

18. Sports Complex acquisition
19. Riverwalk acquisition
20. Sports Complex planning and development
21. Riverwalk planning and development
22. Pavilion planning and development in Glarner park location
23. Northwest play lot acquisition
24. Northwest play lot planning and development.

Appendix 11: Grants- Veteran's Park

- Wisconsin DNR "Knowles-Nelson Stewardship Local Assistance Grant Program,"
<https://dnr.wi.gov/topic/stewardship/grants/applyLUG.html>
 - Veteran's Park could be eligible for this grant as a large renovation project.
- Wisconsin DOT "Transportation Alternatives Program,"
<https://wisconsindot.gov/Pages/doing-bus/local-gov/astnce-pgms/aid/tap.aspx>
 - Veteran's Park, in combination with Complete Streets or Safe Routes to School, could be eligible for this grant for sidewalk, parking lot and adjacent street renovations
- Wisconsin DNR "Healthy Lakes Grant, Surface Water Grants,"
<https://dnr.wi.gov/aid/surfacewater.html>
 - Veteran's Park could be eligible for this reimbursement grant as the park plan incorporates Green Infrastructure that will protect the watershed, and also as the Park commits to conserving the natural habitat of the Sugar River that runs through the Park.
- U.S. Bureau of Reclamation "WaterSMART Grants," <https://www.usbr.gov/watersmart/weeg/>
 - Veteran's Park could be eligible for this grant as it seeks to make sufficient use of water resources and also as the Park will provide landscaping that is designed to develop indigenous ecology and habitat for indigenous species that are threatened or endangered.
- U.S. Department of the Interior, Fish and Wildlife Service "Wildlife and Sport Fish Restoration Program," and "Endangered Species Grants"
<https://wsfrprograms.fws.gov/Subpages/GrantPrograms/GrantProgramsIndex.htm>
 - Veteran's Park could be eligible for this grant as improvements to this park will improve or maintain the health of the river habitat and also provide additional wildlife habitat
- U.S. Department of Transportation, "TIGER Discretionary Grants,"
<https://www.transportation.gov/BUILDgrants>
 - Veteran's Park, in combination with Complete Streets or Safe Routes to School, could be eligible for this grant as the recommended improvements would improve the "safety, economic competitiveness, state of good repair, quality of life and environmental sustainability" for the New Glarus community.
- U.S. Endowment for Forestry and Communities, Inc. "Healthy Watersheds Consortium Grant,"
<http://www.usendowment.org/healthywatersheds.html>
 - Veteran's Park could be eligible for this grant as the recommended improvements would foster the conservation of healthy, freshwater ecosystems
- Wells Fargo, "Environmental Solutions for Communities,"
<https://www.nfwf.org/environmentalsolutions/Pages/home.aspx>
 - Veteran's Park could be eligible for this grant as the recommended improvements would foster the conservation of healthy, freshwater ecosystems

Appendix 10: Veteran's Park Projects Cost Estimates

Appendix 10.1: Parking Lot Estimate

The following is an excerpt from the City of Hartford, WI Common Council Agenda; March 13, 2018, which included "the removal, regrading, new gravel base and installation of 5 inches of asphalt."

TITLE: 2018 Asphalt Paving Program Bid of February 15, 2018.

BACKGROUND: The 2018 Asphalt Pavement Program base Bid includes the placement of approximately 1,425 tons of asphaltic concrete and 9,220 square yards of asphalt pavement

The base bids received were as follows:

	Total Base	Selected Alternates #2 & #3	TOTAL
1. Payne & Dolan	\$127,987.50	\$23,405.00	\$151,392.50
2. Stark Pavement Corp.	\$134,573.55	\$19,811.50	\$154,385.05
3. Wolf Paving	\$142,845.50	\$23,256.90	\$166,102.40
4. Pro-Seal Asphalt Paving	\$164,170.00	\$28,570.00	\$192,740.00

#2015-05 Eaton/Merrill/Barland Road Reconstruction				Cornerstone Pavers		Lalonde Contractors		Milwaukee Gen. Construction		Stark Asphalt		Payne & Dolan	
				6422 WI-31		2929 S. Chase Ave.		4580 S. 13th Street		12845 W. Burleigh Road		N3 W23650 Badinger Road	
				Racine, WI 53402		Milwaukee, WI 53207		Milwaukee, WI 53221		Brookfield, WI 53005		Waukesha, WI 53188	
Item #	Description	Est. Quantity	Unit	Unit Price	Total Price	Unit Price	Total Price	Unit Price	Total Price	Unit Price	Total Price	Unit Price	Total Price
Base Bid - Concrete													
1	Furnish, Install & Maintain Inlet Protection	45	EA	\$49.00	\$2,205.00	\$50.00	\$2,250.00	\$50.00	\$2,250.00	\$50.00	\$2,250.00	No Bid	
2	Furnish Concrete Pavement Removal	18,060	SY	\$2.74	\$49,484.40	\$5.15	\$93,009.00	\$4.06	\$73,323.60	\$6.10	\$110,166.00		
3	Furnish Concrete Sidewalk & Driveway Removal	900	SY	\$3.20	\$2,880.00	\$0.48	\$432.00	\$7.89	\$7,101.00	\$6.60	\$5,940.00		
4	Furnish Unclassified Excavation	3,300	CY	\$9.15	\$30,195.00	\$16.60	\$54,780.00	\$18.35	\$60,555.00	\$22.60	\$74,580.00		
5	Furnish Excavation Below Subgrade (EBS)	650	CY	\$19.00	\$12,350.00	\$16.52	\$10,738.00	\$16.91	\$10,991.50	\$22.60	\$14,690.00		
6	Furnish Sawcut	2,950	LF	\$1.29	\$3,805.50	\$1.99	\$5,870.50	\$1.40	\$4,130.00	\$1.40	\$4,130.00		
7	Furnish & Place 1-1/4" Stone Base	6,550	TON	\$9.90	\$64,845.00	\$13.33	\$87,311.50	\$13.41	\$87,835.50	\$14.20	\$93,010.00		
8	Furnish & Place 7" Concrete Pavement	4,560	SY	\$26.70	\$121,752.00	\$24.08	\$109,804.80	\$22.82	\$104,059.20	\$27.75	\$126,540.00		
9	Furnish & Place 8" Doweled Concrete Pavement	12,500	SY	\$30.33	\$379,125.00	\$29.24	\$365,500.00	\$27.83	\$347,875.00	\$32.60	\$407,500.00		
10	Furnish & Place 30" Curb & Gutter	5,250	LF	\$14.95	\$78,487.50	\$12.92	\$67,830.00	\$13.71	\$71,977.50	\$13.75	\$72,187.50		
11	Furnish & Place 30" Curb & Gutter - Hand Poured	775	LF	\$17.95	\$13,911.25	\$21.90	\$16,972.50	\$20.37	\$15,786.75	\$28.60	\$22,165.00		
12	Furnish & Place 7" Concrete Driveway Apron	515	SY	\$36.00	\$18,540.00	\$42.59	\$21,933.85	\$52.06	\$26,810.90	\$41.40	\$21,321.00		
13	Furnish & Place 7" Concrete Handicap Ramp	1,580	SF	\$4.00	\$6,320.00	\$4.71	\$7,441.80	\$6.07	\$9,590.60	\$5.70	\$9,006.00		
14	Furnish & Place 7" Concrete Sidewalk	260	SF	\$4.00	\$1,040.00	\$4.71	\$1,224.60	\$6.07	\$1,578.20	\$6.50	\$1,690.00		
15	Furnish & Place 5" Concrete Sidewalk	2,450	SF	\$3.75	\$9,187.50	\$3.35	\$8,207.50	\$5.41	\$13,254.50	\$3.75	\$9,187.50		
16	Furnish Tie Bars	2,500	EA	\$4.83	\$12,075.00	\$2.65	\$6,625.00	\$4.66	\$11,650.00	\$5.50	\$13,750.00		
17	Furnish & Install 1/2" Felt	1,250	LF	\$0.85	\$1,062.50	\$0.01	\$12.50	\$0.40	\$500.00	\$1.55	\$1,937.50		
18	Furnish Linseed Oil Cure	250	GAL	\$15.18	\$3,795.00	\$0.01	\$2.50	\$7.75	\$1,937.50	\$10.00	\$2,500.00		
19	Furnish & Place Detectable Warning Fields (24" x 24" Cast DWD Yellow)	48	EA	\$123.00	\$5,904.00	\$27.50	\$1,320.00	\$123.00	\$5,904.00	\$150.00	\$7,200.00		
20	Furnish Traffic Control	1	LS	\$8,500.00	\$8,500.00	\$8,140.00	\$8,140.00	\$4,853.00	\$4,853.00	\$4,500.00	\$4,500.00		
21	Furnish 8" Top Soil & Sod	5,400	SF	\$1.80	\$9,720.00	\$1.75	\$9,450.00	\$1.75	\$9,450.00	\$1.85	\$9,990.00		
22	Furnish Terrace Restoration	7,650	SF	\$1.80	\$13,770.00	\$1.15	\$8,797.50	\$1.15	\$8,797.50	\$1.85	\$14,152.50		
	Subtotal (Items 1-22)				\$848,954.65			\$887,653.55		\$880,211.25		\$1,028,393.00	
Sewer/Drainage Items													
23	Furnish & Install 4" ADS Drain Tile w/ Silt Sock (includes 3/8" stone chip backfill)	4,950	LF	\$5.64	\$27,918.00	\$13.50	\$66,825.00	\$14.13	\$69,943.50	\$15.10	\$74,745.00	No Bid	
24	Adjust Structure (6" or less) (Catchbasins)	34	EA	\$250.00	\$8,500.00	\$475.00	\$16,150.00	\$475.00	\$16,150.00	\$475.00	\$16,150.00		
25	Repair Structure (6" or Greater) (Includes Catchbasins, Manholes & Sanitary)	10	VF	\$500.00	\$5,000.00	\$350.00	\$3,500.00	\$350.00	\$3,500.00	\$350.00	\$3,500.00		
26	Remove Abandoned Structure	3	EA	\$275.00	\$825.00	\$500.00	\$1,500.00	\$500.00	\$1,500.00	\$500.00	\$1,500.00		
27	Furnish & Install 84" Deck Slab Storm MH	6	VF	\$500.00	\$3,000.00	\$1,300.00	\$7,800.00	\$1,300.00	\$7,800.00	\$1,300.00	\$7,800.00		
28	Furnish & Install 60" Deck Slab Storm MH	4	VF	\$420.00	\$1,680.00	\$700.00	\$2,800.00	\$700.00	\$2,800.00	\$700.00	\$2,800.00		
29	Furnish & Install Manhole Frame & Grate (Neenah R-1661-A Frame, Lid w/ Pickhole)	2		\$675.00	\$1,350.00	\$500.00	\$1,000.00	\$500.00	\$1,000.00	\$500.00	\$1,000.00		
30	Furnish & Install 24" x 36" Storm Catchbasin	60	VF	\$240.00	\$14,400.00	\$395.00	\$23,700.00	\$395.00	\$23,700.00	\$395.00	\$23,700.00		
31	Furnish & Install Catch Basin Frame & Grate - Neenah R-3246 w/ Type C Grate	12	EA	\$450.00	\$5,400.00	\$500.00	\$6,000.00	\$500.00	\$6,000.00	\$500.00	\$6,000.00		
32	Furnish & Install 12" RCP Storm Sewer Class V (w/ gravel backfill)	170	LF	\$75.00	\$12,750.00	\$115.50	\$19,635.00	\$115.50	\$19,635.00	\$115.50	\$19,635.00		
33	Furnish Storm Water Basin Construction	250	SY	\$18.00	\$4,500.00	\$4.00	\$1,000.00	\$16.70	\$4,175.00	\$29.50	\$7,375.00		
	Subtotal (Items 23-33)				\$85,323.00			\$149,910.00		\$156,203.50		\$164,205.00	
Concrete Base Bid Totals													
1	General Items (Items 1 - 22)			\$848,954.65		\$887,653.55		\$880,211.25		\$1,028,393.00		No Bid	
2	Sewer/Drainage Items (Items 23 - 33)			\$85,323.00		\$149,910.00		\$156,203.50		\$164,205.00			
3	Contingency			\$25,000.00		\$25,000.00		\$25,000.00		\$25,000.00			
	Base Bid Total			\$959,277.65		\$1,062,563.55		\$1,061,414.75		\$1,217,598.00			
Alternate Asphalt Bid 1													

1	Furnish, Install & Maintain Inlet Protectioion	45	EA	No Bid	No Bid	\$50.00	\$2,250.00	No Bid	No Bid	\$50.00	\$2,250.00	\$55.00	\$2,475.00
2	Furnish Concrete Pavement Removal	17,260	SY			\$5.15	\$88,889.00			\$6.10	\$105,286.00	\$2.00	\$34,520.00
3	Furnish Concrete Sidewalk & Driveway Removal	900	SY			\$0.48	\$432.00			\$6.60	\$5,940.00	\$4.00	\$3,600.00
4	Furnish Unclassified Excavation	3,270	CY			\$16.60	\$54,282.00			\$22.60	\$73,902.00	\$28.00	\$91,560.00
5	Furnish Excavation Below Subgrade (EBS)	650	CY			\$16.52	\$10,738.00			\$22.60	\$14,690.00	\$28.00	\$18,200.00
6	Furnish Sawcut	2,950	LF			\$1.99	\$5,870.50			\$1.40	\$4,130.00	\$1.40	\$4,130.00
7	Furnish & Place 1-1/4" Stone Base	7,200	TON			\$13.33	\$95,976.00			\$14.20	\$102,240.00	\$12.56	\$90,432.00
8	Furnish & Place 4-1/2" HMA Binder Course Type E-3 (19mm) (Multiple Lifts)	4,250	TON			\$51.33	\$218,152.50			\$54.50	\$231,625.00	\$51.98	\$220,915.00
9	Furnish & place 1-1/2" HMA Surface Course Type E-3 (12mm)	1,450	TON			\$55.70	\$80,765.00			\$58.80	\$85,260.00	\$56.42	\$81,809.00
10	Furnish & Place Tac Coat	1,600	GAL			\$2.05	\$3,280.00			\$2.00	\$3,200.00	\$2.06	\$3,296.00
11	Furnish & Place 7" Concrete Pavement	565	SY			\$24.08	\$13,605.20			\$29.75	\$16,808.75	\$34.00	\$19,210.00
12	Furnish & Place 30" Curb & Gutter	5,250	LF			\$12.92	\$67,830.00			\$13.75	\$72,187.50	\$16.50	\$86,625.00
13	Furnish & Place 30" Curb & Gutter - Hand Poured	775	LF			\$21.90	\$16,972.50			\$28.60	\$22,165.00	\$29.00	\$22,475.00
14	Furnish & Place 7" Concrete Driveway APron	515	SY			\$42.59	\$21,933.85			\$41.40	\$21,321.00	\$32.00	\$16,480.00
15	Furnish & Place 7" Concrete Handicap Ramp	1,580	SF			\$4.71	\$7,441.80			\$5.70	\$9,006.00	\$3.90	\$6,162.00
16	Furnish & Place 7" Concrete Sidewalk	150	SF			\$4.71	\$706.50			\$7.00	\$1,050.00	\$3.90	\$585.00
17	Furnish & Place 5" Concrete Sidewalk	2,450	SF			\$3.35	\$8,207.50			\$3.75	\$9,187.50	\$3.74	\$9,163.00
18	Furnish Tie Bars	480	EA			\$2.65	\$1,272.00			\$5.50	\$2,640.00	\$15.00	\$7,200.00
19	Furnish & Install 1/2" Felt	1,250	LF			\$0.01	\$12.50			\$1.55	\$1,937.50	\$3.00	\$3,750.00
20	Furnish Linseed Oil Cure	115	GAL			\$0.01	\$1.15			\$10.00	\$1,150.00	\$13.00	\$1,495.00
21	Furnish & Place Detectable Warning Fields (24" x 24" Cast DWD Yellow)	48	EA			\$27.50	\$1,320.00			\$150.00	\$7,200.00	\$150.00	\$7,200.00
22	Furnish Traffic Control	1	LS			\$20,140.00	\$20,140.00			\$4,500.00	\$4,500.00	\$12,338.00	\$12,338.00
23	Furnish 8" Top Soil & Sod	5,400	SF			\$1.75	\$9,450.00			\$1.85	\$9,990.00	\$2.00	\$10,800.00
24	Furnish Terrace Restoration	7,650	SF			\$1.15	\$8,797.50			\$1.85	\$14,152.50	\$1.00	\$7,650.00
	Subtotal (Items 1-24)						\$738,325.50				\$821,818.75		\$762,070.00
Sewer/Drainage Items													
25	Furnish & Install 4" ADS Drain Tile w/ Silt Sock (includes 3/8" stone chip backfill)	4,950	LF	No Bid	No Bid	\$13.50	\$66,825.00	No Bid	No Bid	\$15.10	\$74,745.00	\$13.50	\$66,825.00
26	Adjust Structure (6" or less) (Catchbasins)	34	EA			\$475.00	\$16,150.00			\$475.00	\$16,150.00	\$400.00	\$13,600.00
27	Repair Structure (6" or Greater) (Includes Catchbasins, Manholes & Sanitary)	10	VF			\$350.00	\$3,500.00			\$350.00	\$3,500.00	\$1,000.00	\$10,000.00
28	Remove Abandoned Structure	3	EA			\$500.00	\$1,500.00			\$500.00	\$1,500.00	\$400.00	\$1,200.00
29	Furnish & Install 84" Deck Slab Storm MH	6	VF			\$1,300.00	\$7,800.00			\$1,300.00	\$7,800.00	\$1,500.00	\$9,000.00
30	Furnish & Install 60" Deck Slab Storm MH	4	VF			\$700.00	\$2,800.00			\$700.00	\$2,800.00	\$1,200.00	\$4,800.00
31	Furnish & Install Manhole Frame & Grate (Neenah R-1661-A Frame, Lid w/ Pickhole)	2	EA			\$500.00	\$1,000.00			\$500.00	\$1,000.00	\$850.00	\$1,700.00
32	Furnish & Install 24"x36" Storm Catchbasin	60	VF			\$395.00	\$23,700.00			\$395.00	\$23,700.00	\$600.00	\$36,000.00
33	Furnish & Install Catch Basin Frame & Grate - Neenah R-3246 w/ Type C Grate	12	EA			\$500.00	\$6,000.00			\$500.00	\$6,000.00	\$950.00	\$11,400.00
34	Furnish & Install 12" RCP Storm Sewer Class V (w/ gravel backfill)	170	LF			\$115.50	\$19,635.00			\$115.00	\$19,550.00	\$105.00	\$15,015.00
35	Furnish Storm Water Basin Construction	250	SY			\$4.00	\$1,000.00			\$29.50	\$7,375.00	\$20.64	\$5,160.00
	Subtotal (Items 25-35)						\$149,910.00				\$164,120.00		\$174,700.00
Alternate 1 - Asphalt Bid Totals													
1	General Items (Items 1 - 24)					\$0.00				\$0.00		\$821,818.75	\$762,070.00
2	Sewer/Drainage Items (Items 25-35)					\$0.00				\$0.00		\$164,120.00	\$174,700.00
3	Contingency					\$25,000.00				\$0.00		\$25,000.00	\$25,000.00
	Base Bid Total					NO BID				NO BID		\$1,010,938.75	\$961,770.00
Alternate 2 Concrete													
1	Furnish, Install & Maintain Inlet Protection	20	EA	\$15.00	\$300.00	\$50.00	\$1,000.00	\$50.00	\$1,000.00	\$50.00	\$1,000.00		
2	Furnish 7" Concrete Pavement Removal	4,560	SY	\$3.00	\$13,680.00	\$5.15	\$23,484.00	\$4.08	\$18,604.80	\$7.00	\$31,920.00		
3	Furnish Concrete Sidewalk & Driveway Removal	600	SY	\$4.50	\$2,700.00	\$0.48	\$288.00	\$7.89	\$4,734.00	\$7.00	\$4,200.00		
4	Furnish Unclassified Excavation	770	CY	\$14.50	\$11,165.00	\$16.60	\$12,782.00	\$19.72	\$15,184.40	\$23.50	\$18,095.00		
5	Furnish Excavation Below Subgrade (EBS)	100	CY	\$18.00	\$1,800.00	\$16.52	\$1,652.00	\$19.72	\$1,972.00	\$23.50	\$2,350.00		

6	Furnish Sawcut	500	LF	\$1.35	\$675.00	\$1.99	\$995.00	\$1.50	\$750.00	\$1.80	\$900.00	No Bid	
7	Furnish & Place 1-1/4" Stone Base	1,450	TON	\$14.40	\$20,880.00	\$13.33	\$19,328.50	\$13.41	\$19,444.50	\$16.00	\$23,200.00		
8	Furnish & Place 7" Concrete Pavement	4,560	SY	\$28.00	\$127,680.00	\$24.08	\$109,804.80	\$23.82	\$108,619.20	\$27.75	\$126,540.00		
9	Furnish & Place 30" Curb & Gutter	2,650	LF	\$14.95	\$39,617.50	\$11.30	\$29,945.00	\$13.43	\$35,589.50	\$13.75	\$36,437.50		
10	Furnish & Place 30" Curb & Gutter - Hand Poured	175	LF	\$17.95	\$3,141.25	\$18.75	\$3,281.25	\$20.37	\$3,564.75	\$30.60	\$5,355.00		
11	Furnish & Place 7" Concrete Driveway Apron	480	SY	\$36.00	\$17,280.00	\$42.59	\$20,443.20	\$52.06	\$24,988.80	\$41.50	\$19,920.00		
12	Furnish & Place 7" Concrete Handicap Ramp	800	SF	\$4.75	\$3,800.00	\$4.71	\$3,768.00	\$6.07	\$4,856.00	\$6.10	\$4,880.00		
13	Furnish & Place 5" Concrete Sidewalk	150	SF	\$4.65	\$697.50	\$4.71	\$706.50	\$6.07	\$910.50	\$6.70	\$1,005.00		
14	Furnish & Place 5" Concrete Sidewalk	450	SF	\$3.70	\$1,665.00	\$3.35	\$1,507.50	\$5.41	\$2,434.50	\$5.25	\$2,362.50		
15	Furnish Tie Bars	900	EA	\$5.20	\$4,680.00	\$1.54	\$1,386.00	\$4.66	\$4,194.00	\$5.50	\$4,950.00		
16	Furnish & Install 1/2" Felt	950	LF	\$1.00	\$950.00	\$0.01	\$9.50	\$0.40	\$380.00	\$1.55	\$1,472.50		
17	Furnish Linseed Oil Cure	25	GAL	\$15.18	\$379.50	\$0.01	\$0.25	\$7.75	\$193.75	\$10.00	\$250.00		
18	Furnish & Place Detectable Warning Fields (24" x 24" Cast DWD Yellow)	20	EA	\$123.00	\$2,460.00	\$26.67	\$533.40	\$123.00	\$2,460.00	\$150.00	\$3,000.00		
19	Furnish Traffic Control	1	LS	\$13,850.00	\$13,850.00	\$8,140.00	\$8,140.00	\$1,667.00	\$1,667.00	\$2,500.00	\$2,500.00		
20	Furnish Structure Adjustment (6" or Less) (Catch Basins)	19	EA	\$240.00	\$4,560.00	\$350.00	\$6,650.00	\$475.00	\$9,025.00	\$475.00	\$9,025.00		
21	Furnish Terrace Restoration	6,300	SF	\$1.80	\$11,340.00	\$1.15	\$7,245.00	\$1.15	\$7,245.00	\$1.90	\$11,970.00		
	Subtotal (Items 1 -21)					\$283,300.75		\$252,949.90		\$267,817.70	\$311,332.50		
	Contingency					\$15,000.00		\$15,000.00		\$15,000.00	\$15,000.00		
	Eaton/Merrill Only Total					\$298,300.75		\$267,949.90		\$282,817.70	\$326,332.50		
	Base Bid - Final												
	Concrete Base Bid					\$959,277.65		\$1,062,563.55		\$1,061,414.75		\$1,217,598.00	
	Alternate 1 - Final												
	Asphalt Alternate 1 Bid					NO BID		\$973,655.50		NO BID		\$1,010,938.75	
	Extras & Deletions - Final												
	Concrete Base Bid - Replace 4" Drain Tile w/ 12" ADS AdvanEdge					\$10.00/LF		\$93,060.00		\$104,643.00		\$95,000.00	
	Asphalt Base Bid - Replace 4" Drain Tile w/ 12" ADS AdvanEdge					NO BID		\$93,060.00		NO BID		\$95,000.00	
	Alternate 3 - Final												
	Alternate 3 - Eaton/Merrill Concrete Only Bid					\$283,300.75		\$267,949.90		\$282,817.70		\$326,332.50	
</													

Appendix 10-3: Restroom Estimate

Below is an excerpt from a memorandum “Cost of Building Public Restrooms,” including a report written by Karen Halladay, Budget and Policy Analyst, for Salt Lake City Corporation Parks and Public Land Division, Budget Impact Capital Improvement Program; January 2013.

- The lowest cost for a 4-room building was pre-fabricated ROMTEC in Roseburg, Oregon at \$149,293 while the highest option for a 4-room building was Restroom Facility in Nevada at \$351,483.
- The average cost was \$208,934 and the American Ready Kontainer (re-purposed containers) cost for a 4-room facility is \$217,750.
- The City’s 1700 South River Park project cost was \$158,264.
- Projects (1, 4 or 6 room(s) ADA) studied include restroom facilities located in: types/locations, Washington, Kentucky, Nevada – 2 types, and Utah – American Ready Kontainer.

Sport Court WI

1833 Executive DR
Suite 101
Oconomowoc, WI 53066

Phone #	414-431-8660
E-mail	
alec@sportcourtwi.com	



Estimate

Date	Estimate #
12/4/2018	2018-297

Name / Address

Project

Description	Qty	Cost	Total
For Tennis Court Resurfacing - 3 court battery - 120'x156' (18,720 sq. ft.)			
Sport Court Suspended Sports Surface	18,720	3.73	69,825.60
Douglas Tennis Net Set*	3	879.00	2,637.00
- Includes new posts, anchors and net			
* May be able to reuse existing posts/net			
Installation Fee/Labor	1	7,149.00	7,149.00
Paint & Supplies	1	2,100.00	2,100.00
- For 3 tennis courts, 6 pickleball courts, 2 half basketball courts			
Shipping charges/Freight	1	3,520.00	3,520.00
- Direct to site, owner responsible for accepting/storing material until installation can be scheduled			
Site Work*	1	18,229.20	18,229.20
- Involves: removing existing tennis posts, install new concrete footings w/ sleeves, reinstalling tennis posts, cleaning surface, cleaning cracks, sealing cracks and touching up repairs w/ Plexipave color			
* By Armstrong Paving			
Budgetary Estimate Only		Total	\$103,460.80

Customer Signature _____

Appendix 10-5: Playground replacement estimate

Below is an excerpt from City of Portage, WI Request for Proposals for a design and build of playground equipment in Sunset Park, March, 2018

VIII. SCORING OF PROPOSALS

The City of Portage has budgeted **\$55,000** for the Sunset Playground Project. That budget includes all aspects of the project including design, safety surfacing, playground equipment, installation and delivery, etc.

1. Cost of Services

Provide a “cost not to exceed” figure for the project.

2. The award will be based upon written proposal. Interviews may be selected for some vendors.

- A) Creativity and quality
- B) ADA Accessibility of the design
- C) Safety
- D) Number of play components/events in the design
- E) Performance record and recommendations
- F) Guarantees covering equipment, labor and workmanship
- G) Post guarantee service provided

About UniverCity Year



UniverCity Year is a three-phase partnership between UW-Madison and one community in Wisconsin. The concept is simple. The community partner identifies projects that would benefit from UW-Madison expertise. Faculty from across the university incorporate these projects into their courses, and UniverCity Year staff provide administrative support to ensure the collaboration's success. The results are powerful. Partners receive big ideas and feasible recommendations that spark momentum towards a more sustainable, livable, and resilient future. Join us as we create **better places together**.



univercityalliance@wisc.edu
608-890-0330
univercity.wisc.edu